

# 205 DOWNTOWN

205

AN ARKAN PALM DEVELOPMENT





Welcome to the  
Downtown of  
Sheikh Zayed





# 205

AN ARKAN PALM DEVELOPMENT

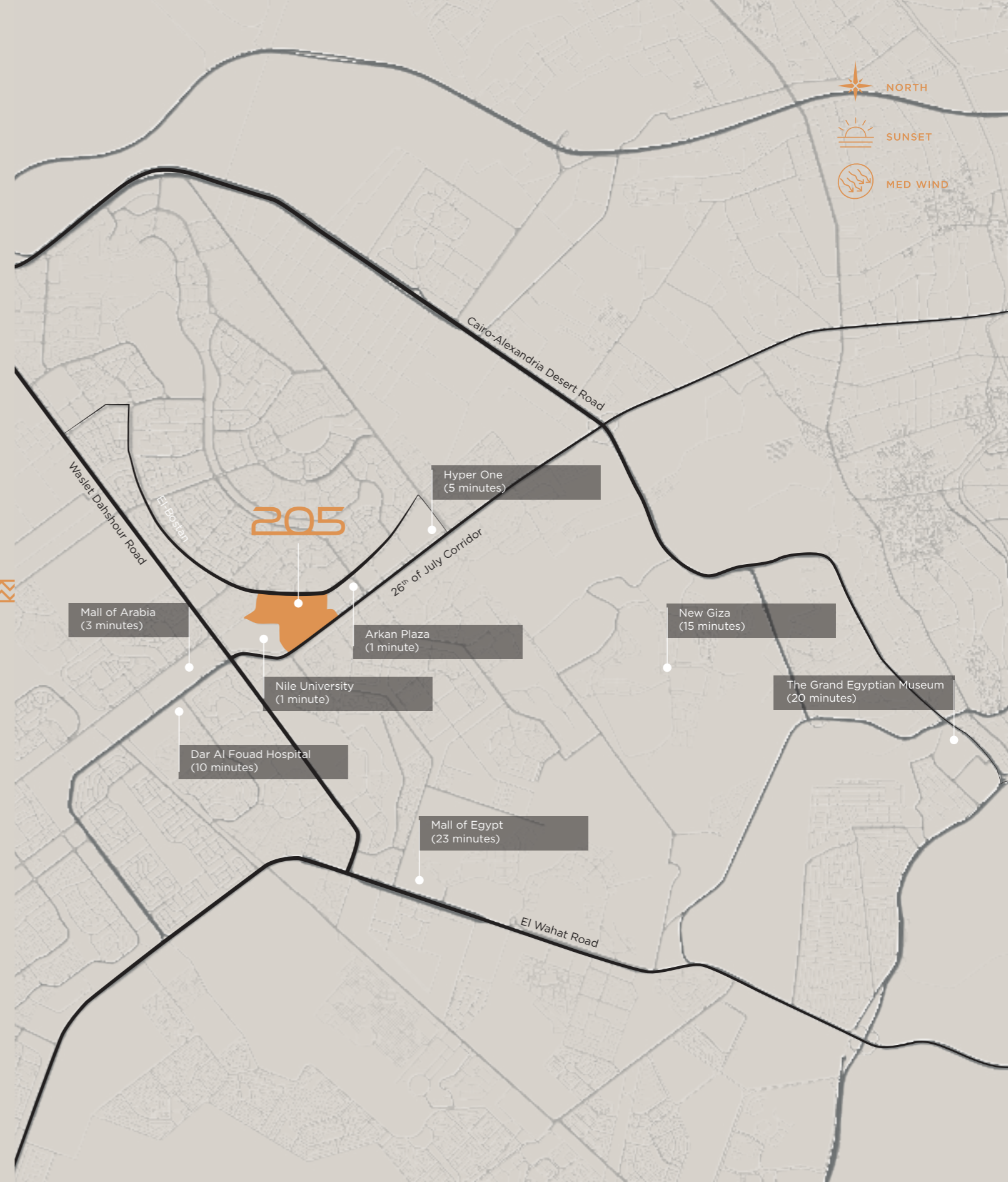
205 is a fully-fledged, world-class destination in West Cairo, bringing forth an unprecedented, innovative urban concept with never-before-seen architecture, landscaping and design to the city of Sheikh Zayed. With an immense land area of 205 acres, this project fittingly qualifies as a development of unmatched proportions, exemplifying the true meaning behind 'a city within a city.'

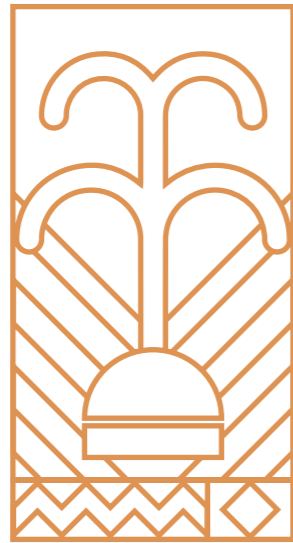
205 caters to the diverse needs and lifestyle choices of its residents, providing them with a suite of amenities and comforts that are unmatched in West Cairo.





# LOCATION MAP





# 205 DOWNTOWN

205 Downtown has got you covered with all your needs. The unique space is located in the heart of Sheikh Zayed. 205 Downtown offers offices for achieving the utmost productivity as well as, retail and commercial spaces for your next shopping splurge, a signature hotel providing ultimate tranquility. Enjoy all of your necessities at the center of it all.





205  
DOWNTOWN

MED WIND

EL BOSTAN ROAD

CANAL WALK ISLAND

INTERNATIONAL  
SCHOOL

EL SAFA MED PARK

THE TOWERS

BUSINESS PARK

SUNSET

26th OF JULY CORRIDOR



# 205 MASTERPLAN





DOWNTOWN  
MASTERPLAN











# Upscale Retail

The Ultimate Shopping  
Experience





# Signature Hotel

Pamper Your Guests Only A  
Few Blocks Away





# Boutique Residences

Your Home at The Center Of It All





# METROPOLIS

◆ OFFICES ◆

205's Metropolis Offices are an integral part of the 205 Downtown. Metropolis Offices consists of three office buildings overlooking the stunning view of 205 and offer easy, hassle free access right off of El Bostan Road ready to meet your vigorous and essential working needs.



**METROPOLIS**  
◆ OFFICES ◆



**METROPOLIS  
MASTERPLAN**





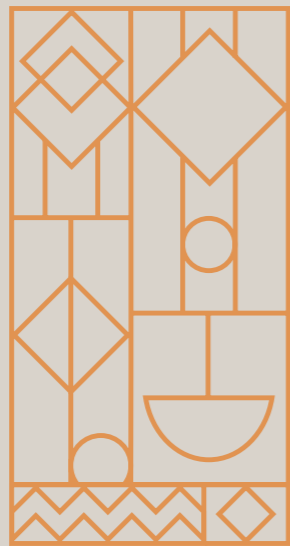




# Workplace

Find The Perfect Space For  
Your Business At Metropolis  
Offices





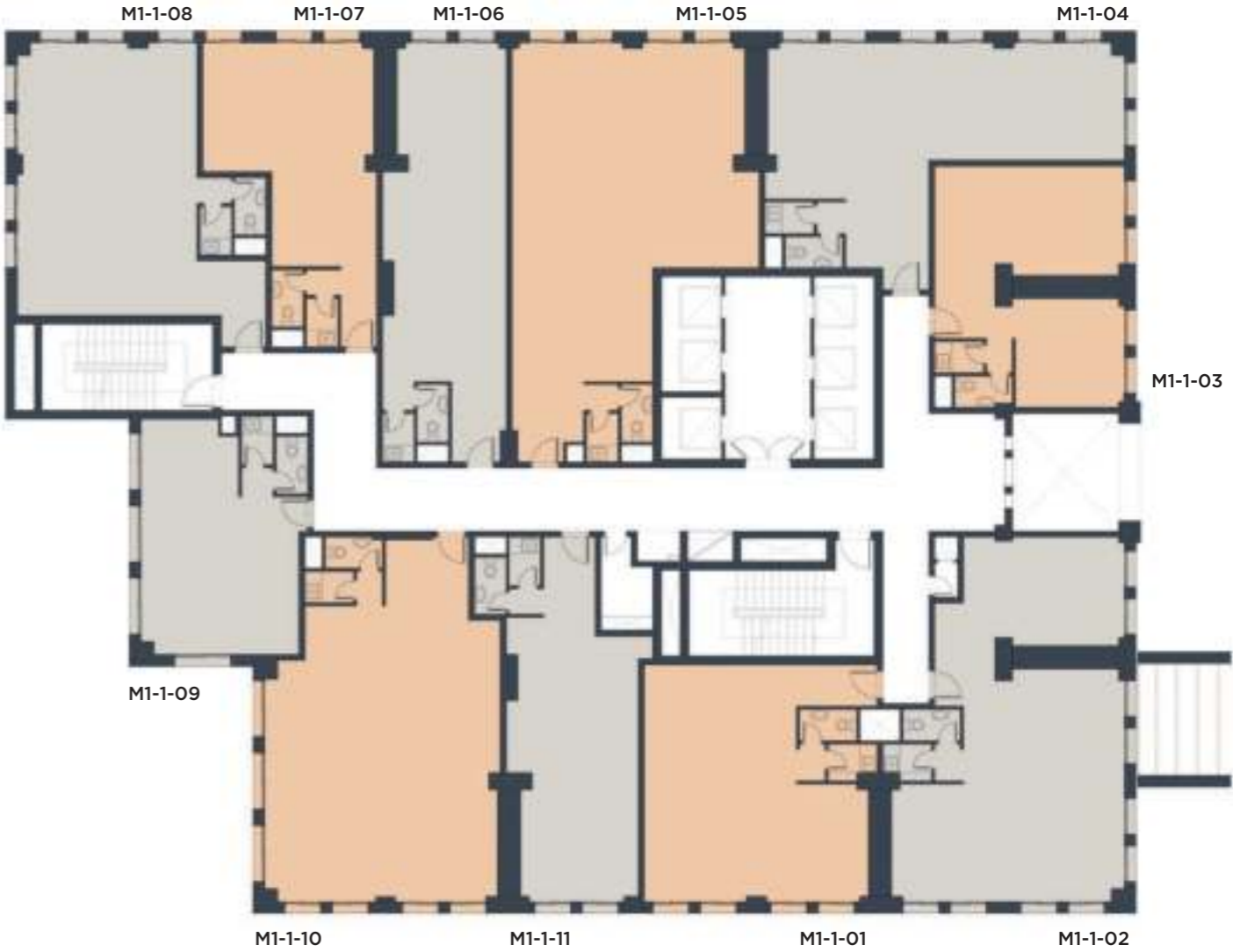
METROPOLIS ♦ I  
♦ OFFICES ♦

Floor Plans



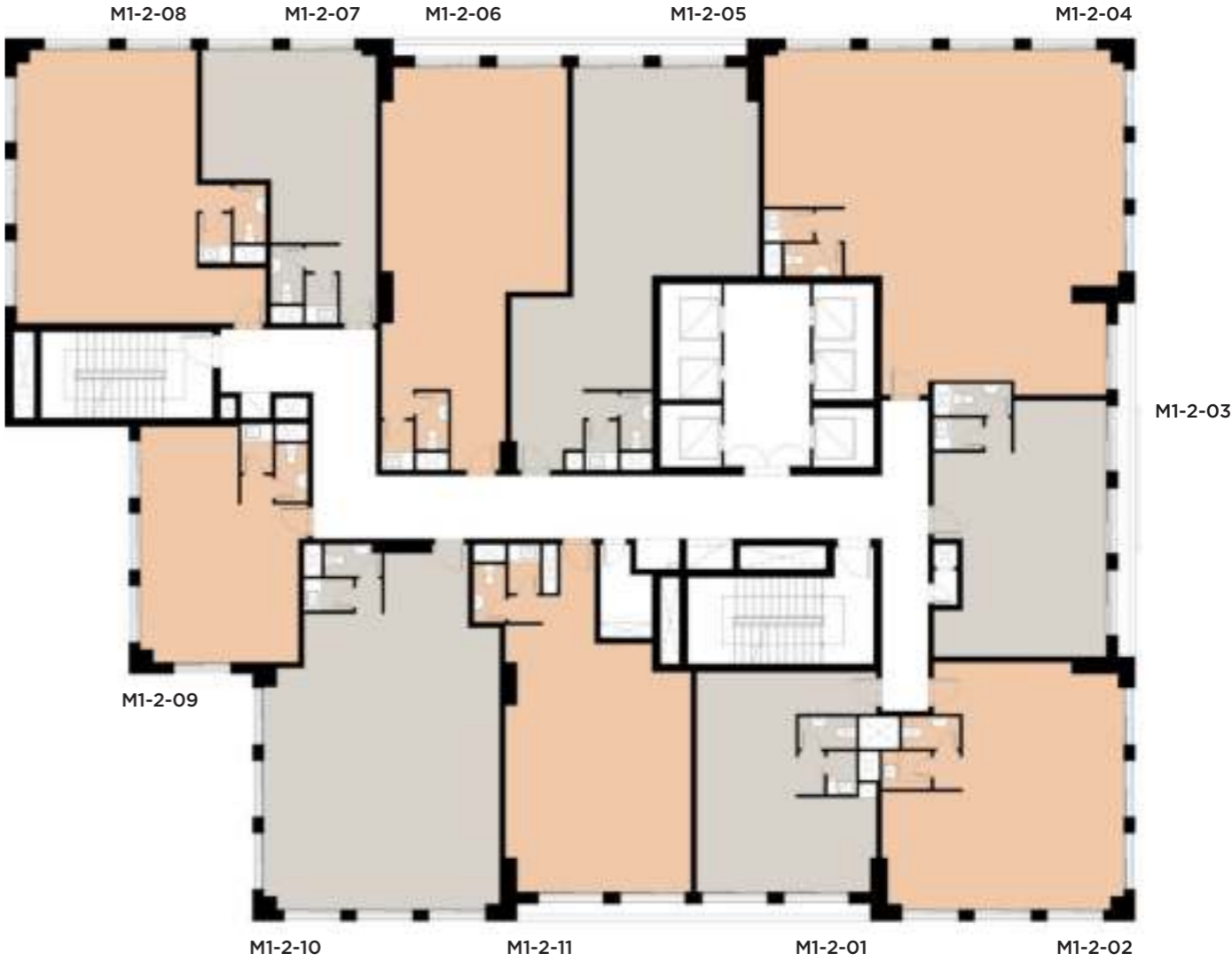
# First Floor

Unit Number	Gross Area (sqm)
M1-1-01	94
M1-1-02	138
M1-1-03	80
M1-1-04	107
M1-1-05	137
M1-1-06	84
M1-1-07	65
M1-1-08	102
M1-1-09	70
M1-1-10	127
M1-1-11	78
<b>Total</b>	<b>1086</b>



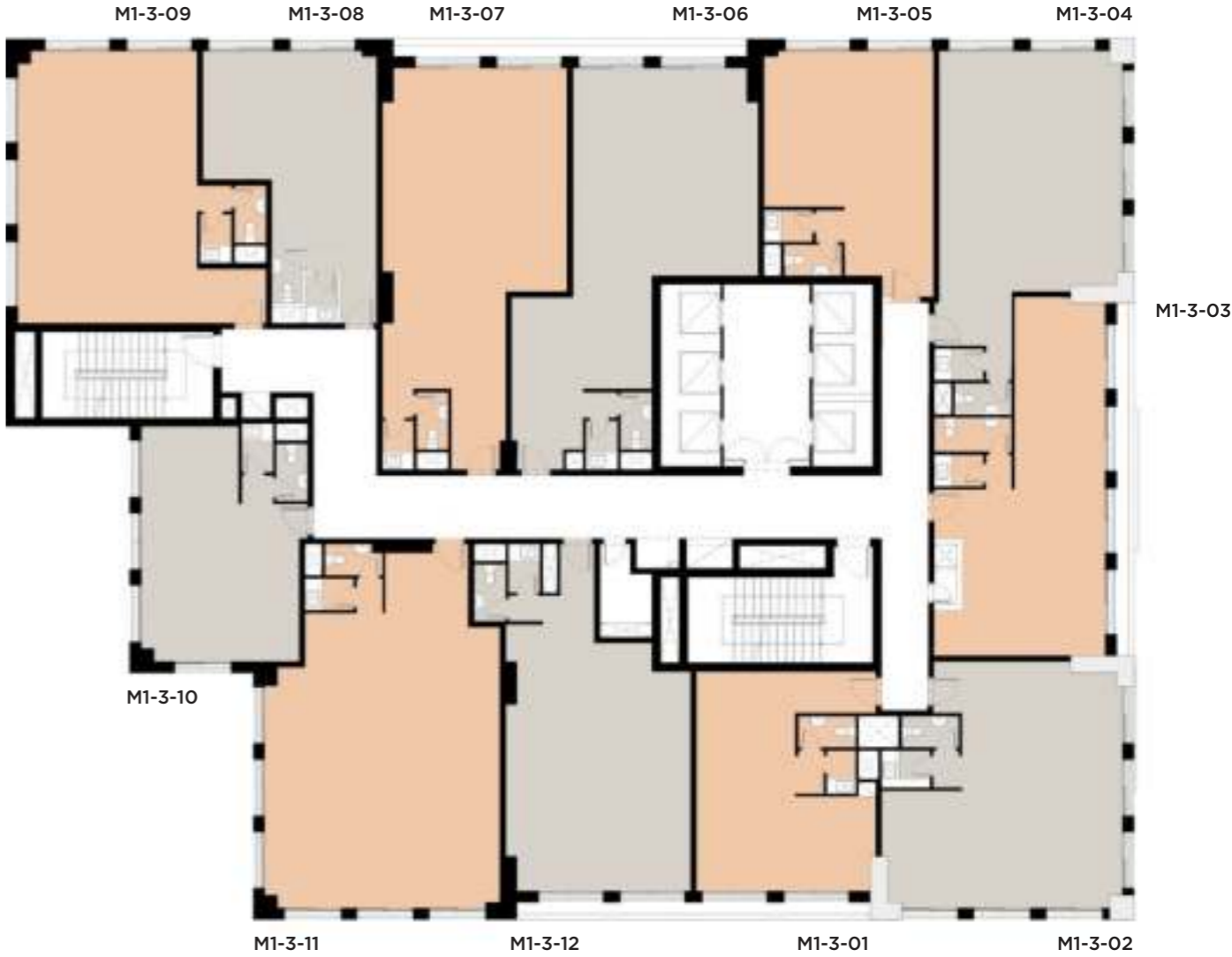
# Second Floor

Unit Number	Gross Area (sqm)
M1-2-01	68
M1-2-02	99
M1-2-03	75
M1-2-04	183
M1-2-05	113
M1-2-06	108
M1-2-07	65
M1-2-08	100
M1-2-09	68
M1-2-10	135
M1-2-11	93
<b>Total</b>	<b>1107</b>



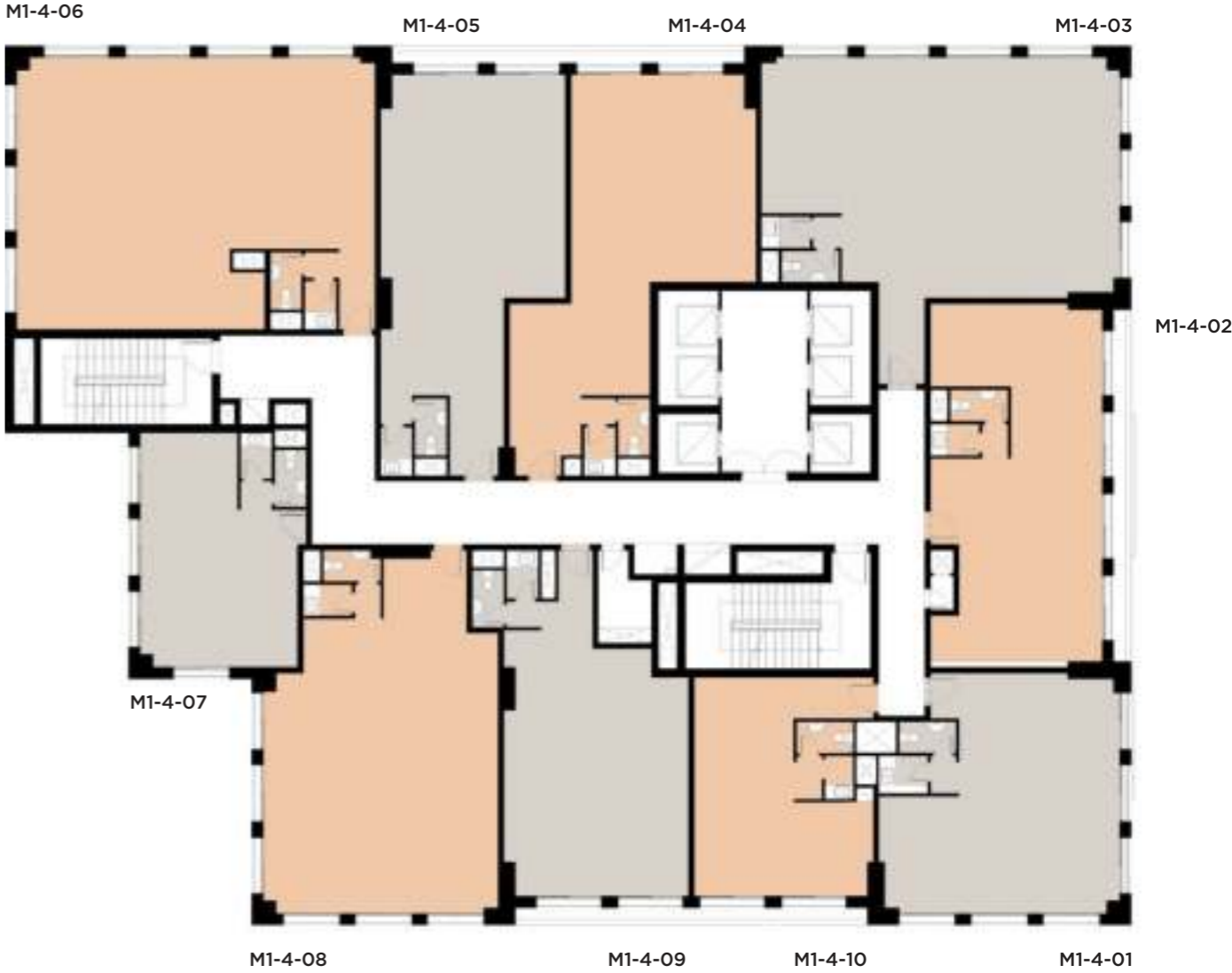
# Third Floor

Unit Number	Gross Area (sqm)
M1-3-01	71
M1-3-02	99
M1-3-03	93
M1-3-04	95
M1-3-05	70
M1-3-06	113
M1-3-07	103
M1-3-08	64
M1-3-09	100
M1-3-10	68
M1-3-11	135
M1-3-12	93
<b>Total</b>	<b>1104</b>



# Fourth Floor

Unit Number	Gross Area (sqm)
M1-4-01	99
M1-4-02	101
M1-4-03	154
M1-4-04	113
M1-4-05	108
M1-4-06	170
M1-4-07	68
M1-4-08	135
M1-4-09	93
M1-4-10	70
<b>Total</b>	<b>1111</b>



# Fifth Floor

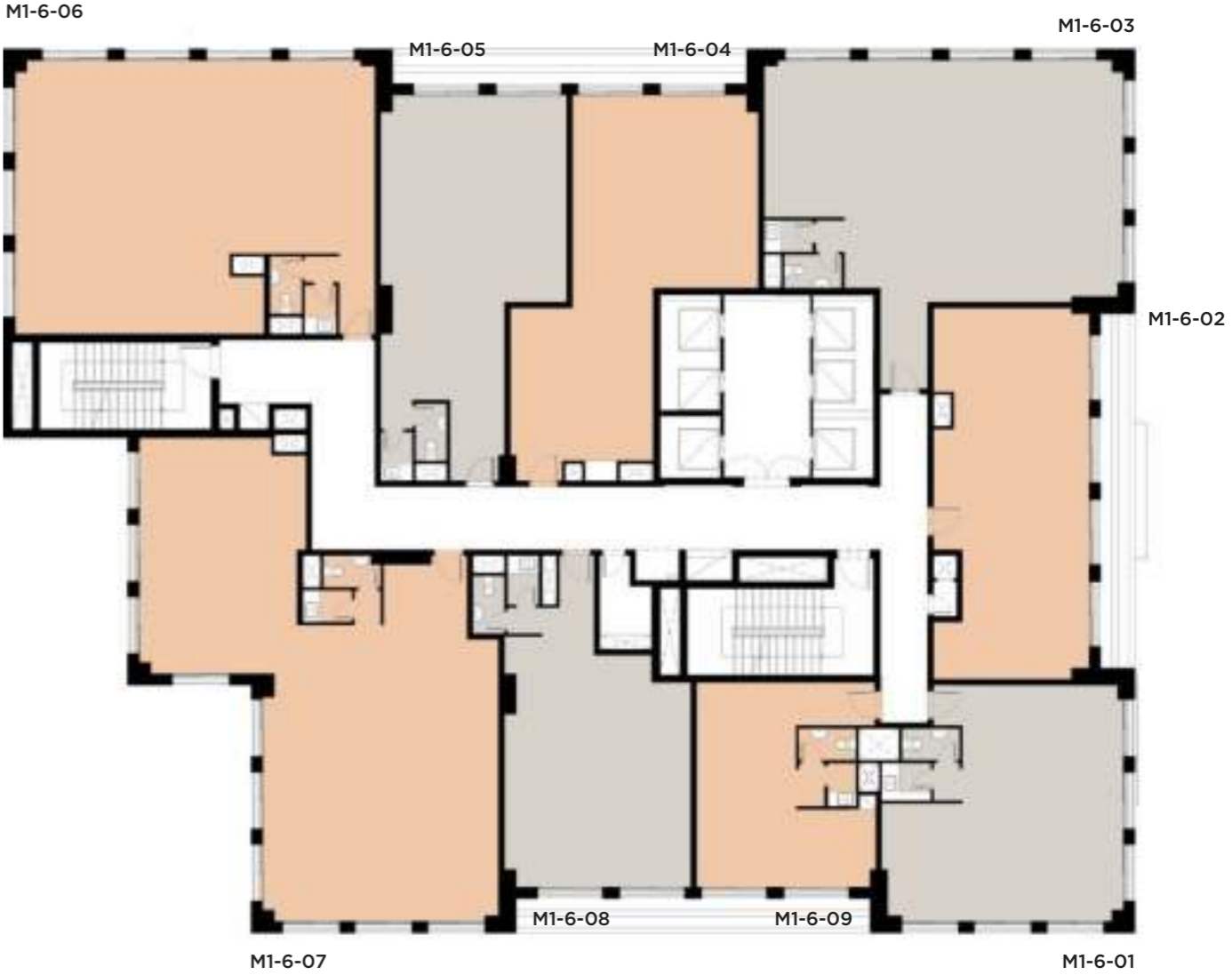
Unit Number	Gross Area (sqm)
M1-5-01	99
M1-5-02	94
M1-5-03	154
M1-5-04	108
M1-5-05	103
M1-5-06	170
M1-5-07	68
M1-5-08	135
M1-5-09	158
<b>Total</b>	<b>1091</b>





# Sixth Floor

Unit Number	Gross Area (sqm)
M1-6-01	96
M1-6-02	101
M1-6-03	155
M1-6-04	109
M1-6-05	104
M1-6-06	170
M1-6-07	205
M1-6-08	90
M1-6-09	63
<b>Total</b>	<b>1093</b>



# Seventh Floor

Unit Number	Gross Area (sqm)
M1-7-01	95
M1-7-02	103
M1-7-03	155
M1-7-04	109
M1-7-05	103
M1-7-06	170
M1-7-07	77
M1-7-08	129
M1-7-09	90
M1-7-10	63
<b>Total</b>	<b>1094</b>



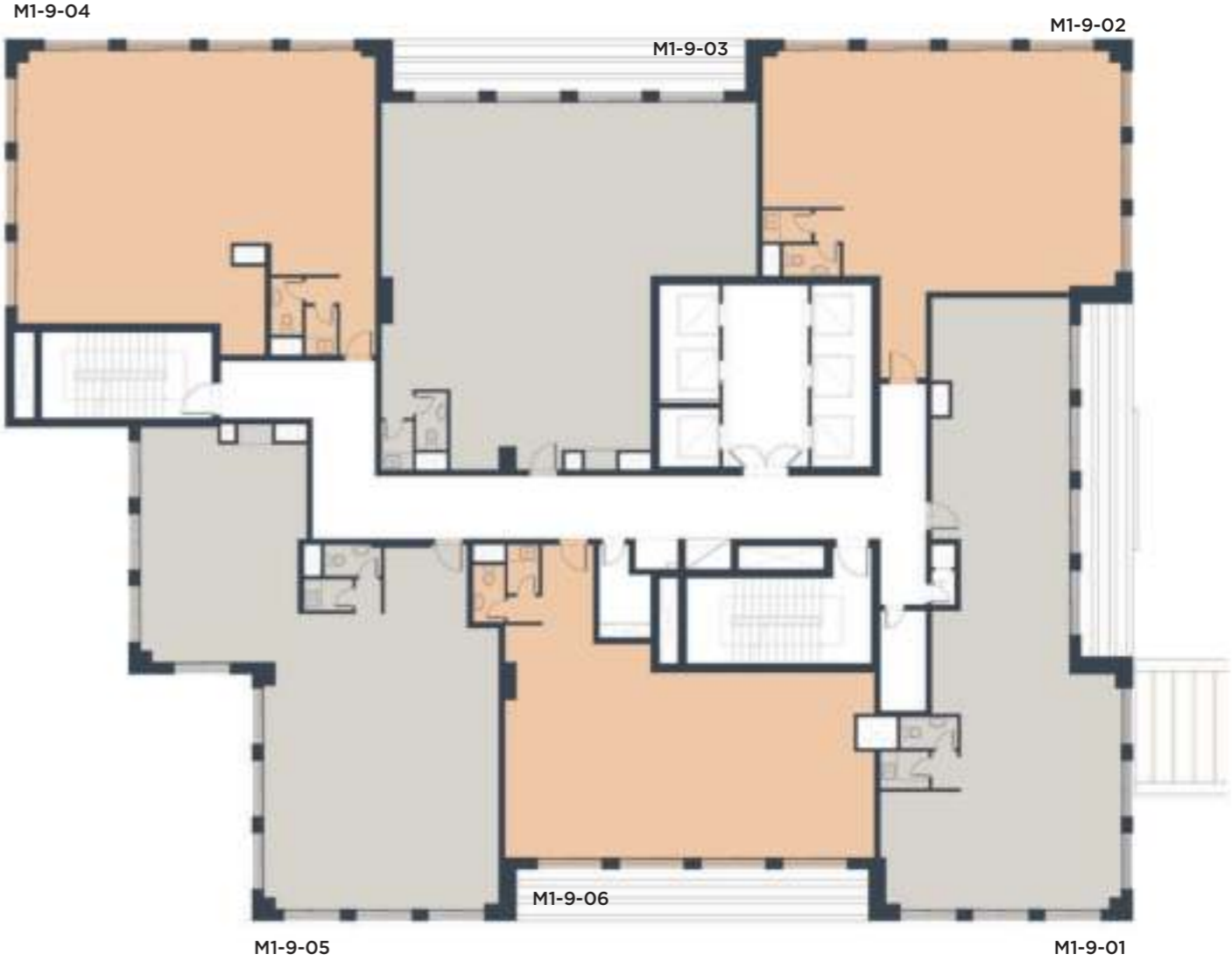
# Eighth Floor

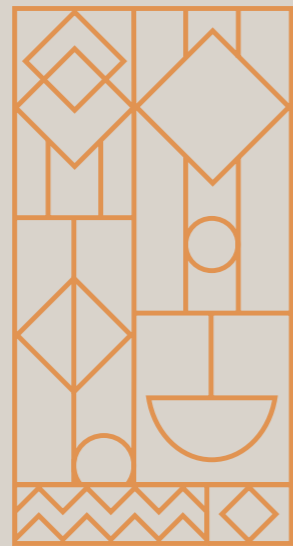
Unit Number	Gross Area (sqm)
M1-8-01	363
M1-8-03	202
M1-8-04	170
M1-8-05	75
M1-8-06	270
<b>Total</b>	<b>1080</b>



# Ninth Floor

Unit Number	Gross Area (sqm)
M1-9-01	183
M1-9-02	155
M1-9-03	202
M1-9-04	170
M1-9-05	205
M1-9-06	140
<b>Total</b>	<b>1055</b>





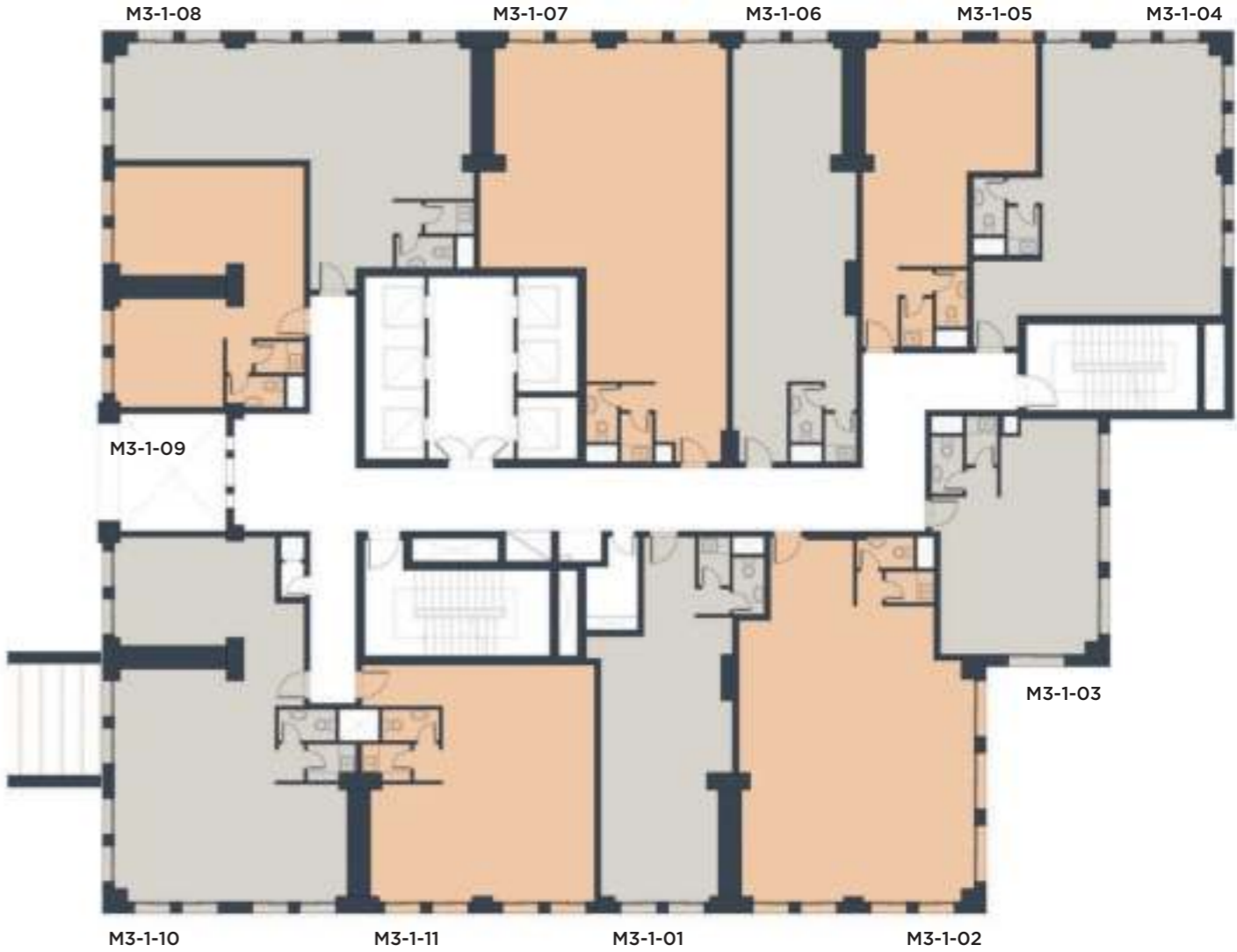
METROPOLIS ♦ III  
♦ OFFICES ♦

Floor Plans



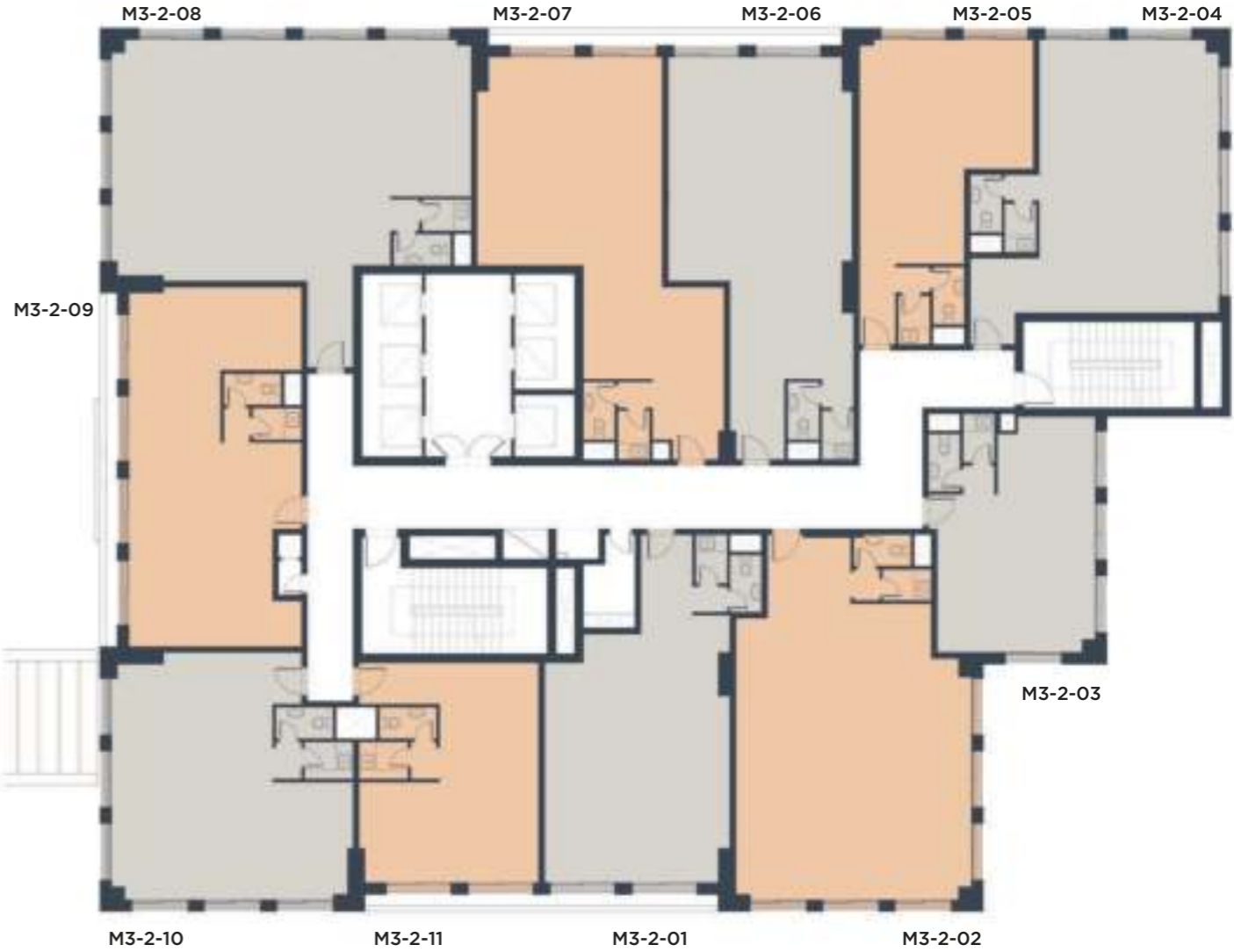
# First Floor

Unit Number	Gross Area (sqm)
M3-1-01	79
M3-1-02	134
M3-1-03	69
M3-1-04	104
M3-1-05	72
M3-1-06	85
M3-1-07	139
M3-1-08	106
M3-1-09	80
M3-1-10	135
M3-1-11	94
<b>Total</b>	<b>1098</b>



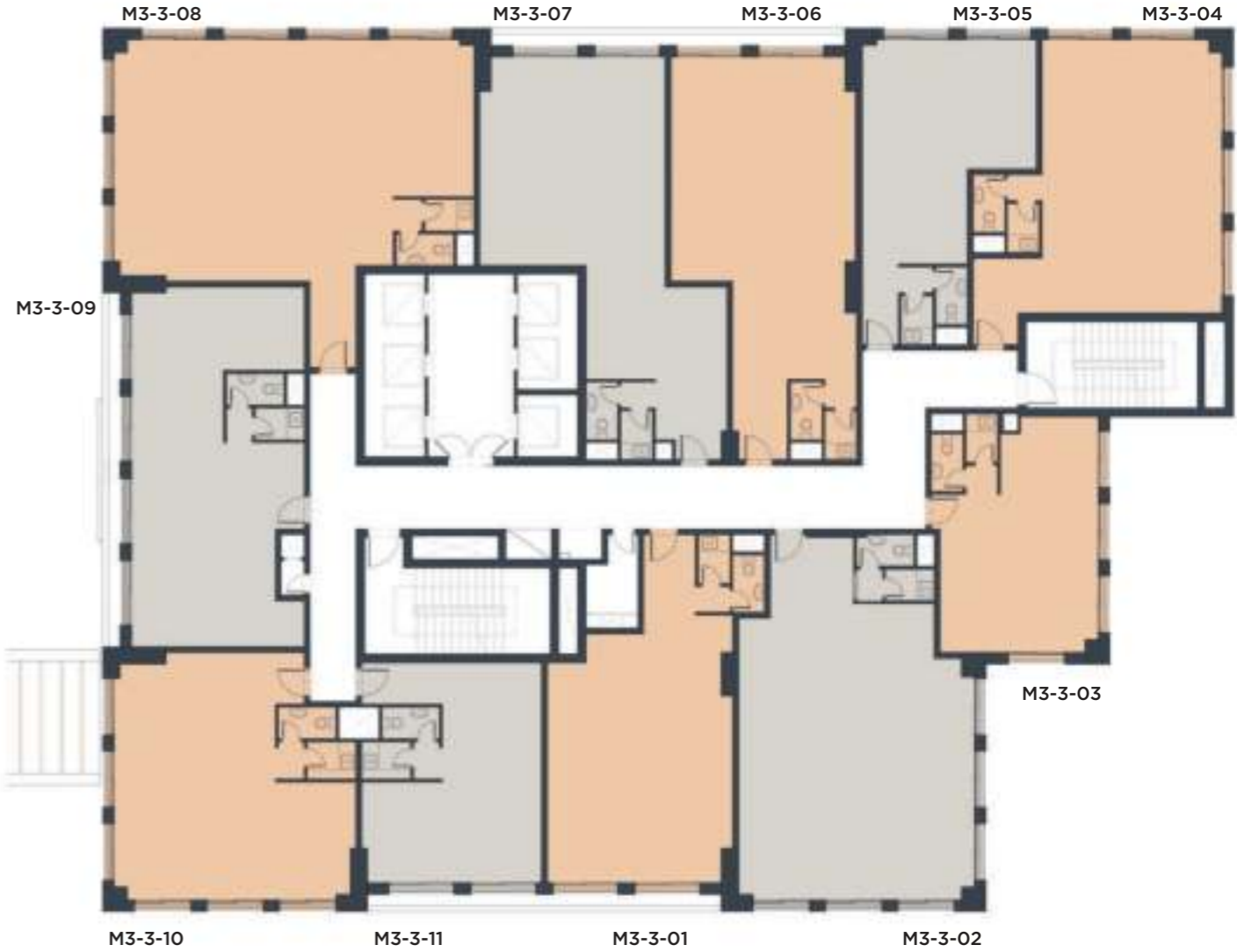
# Second Floor

Unit Number	Gross Area (sqm)
M3-2-01	96
M3-2-02	134
M3-2-03	69
M3-2-04	106
M3-2-05	72
M3-2-06	106
M3-2-07	111
M3-2-08	154
M3-2-09	104
M3-2-10	98
M3-2-11	69
<b>Total</b>	<b>1119</b>



# Third Floor

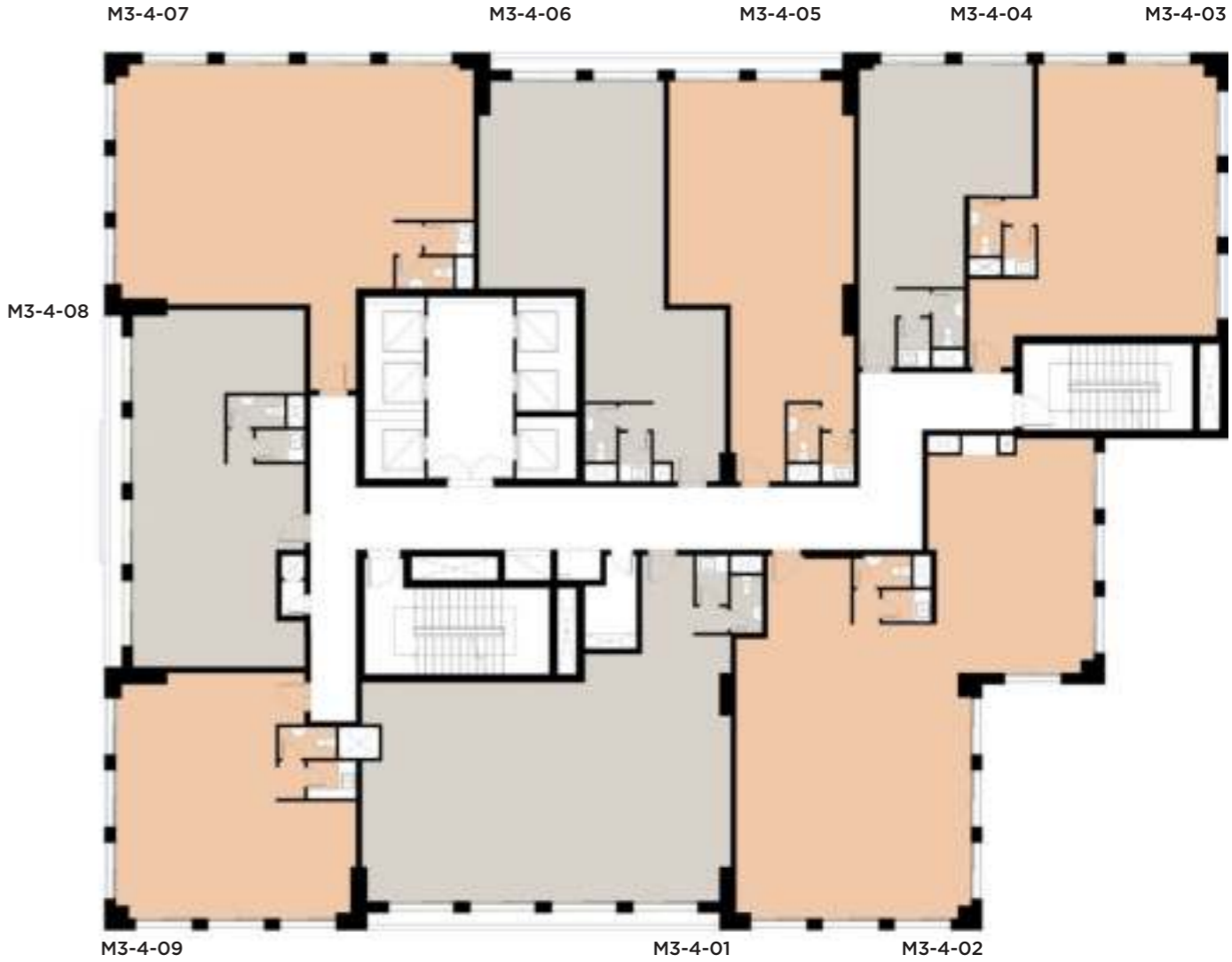
Unit Number	Gross Area (sqm)
M3-3-01	96
M3-3-02	134
M3-3-03	69
M3-3-04	106
M3-3-05	72
M3-3-06	106
M3-3-07	111
M3-3-08	154
M3-3-09	104
M3-3-10	98
M3-3-11	69
<b>Total</b>	<b>1119</b>





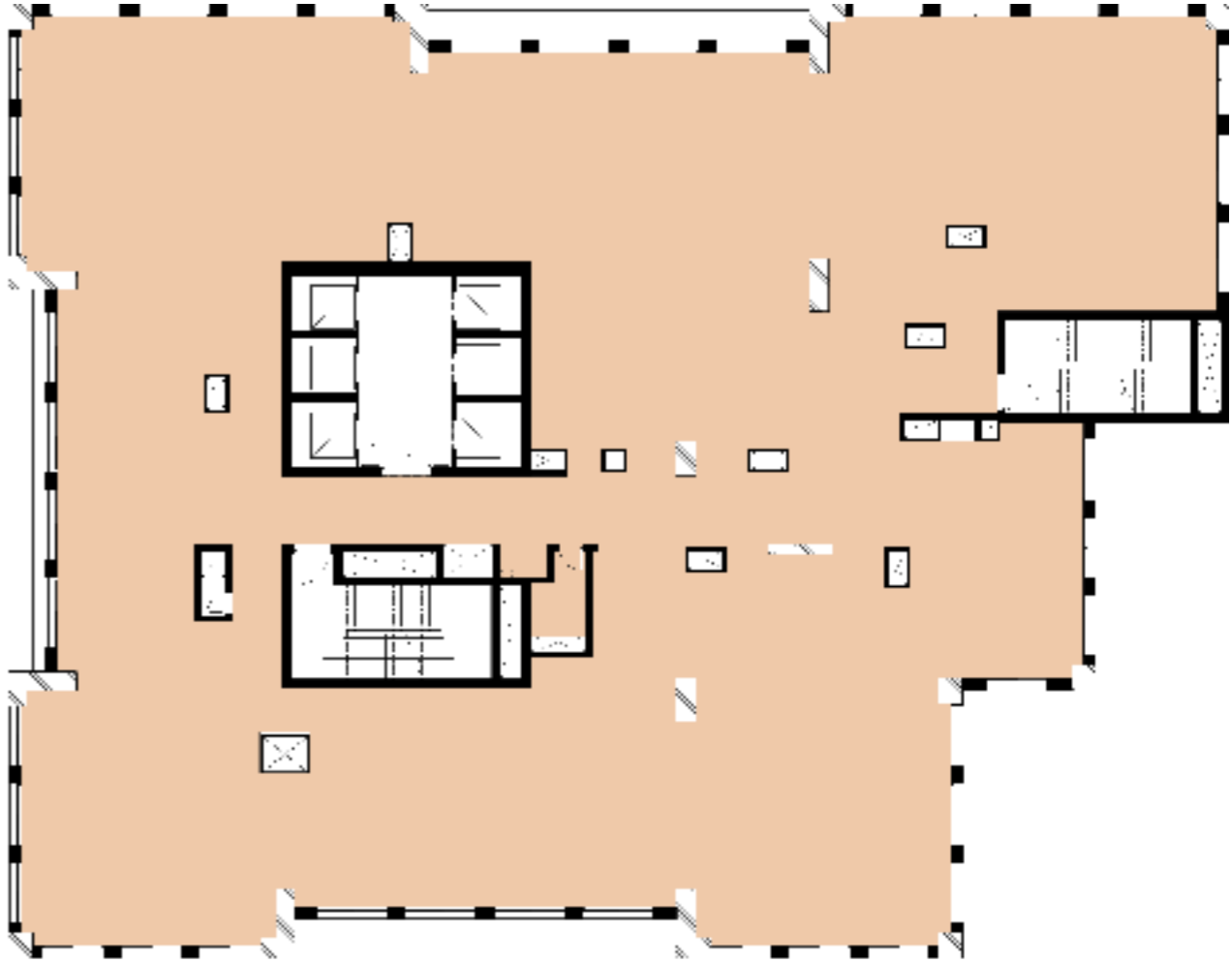
# Fourth Floor

Unit Number	Gross Area (sqm)
M3-4-01	164
M3-4-02	204
M3-4-03	106
M3-4-04	72
M3-4-05	106
M3-4-06	111
M3-4-07	154
M3-4-08	104
M3-4-09	98
<b>Total</b>	<b>1119</b>



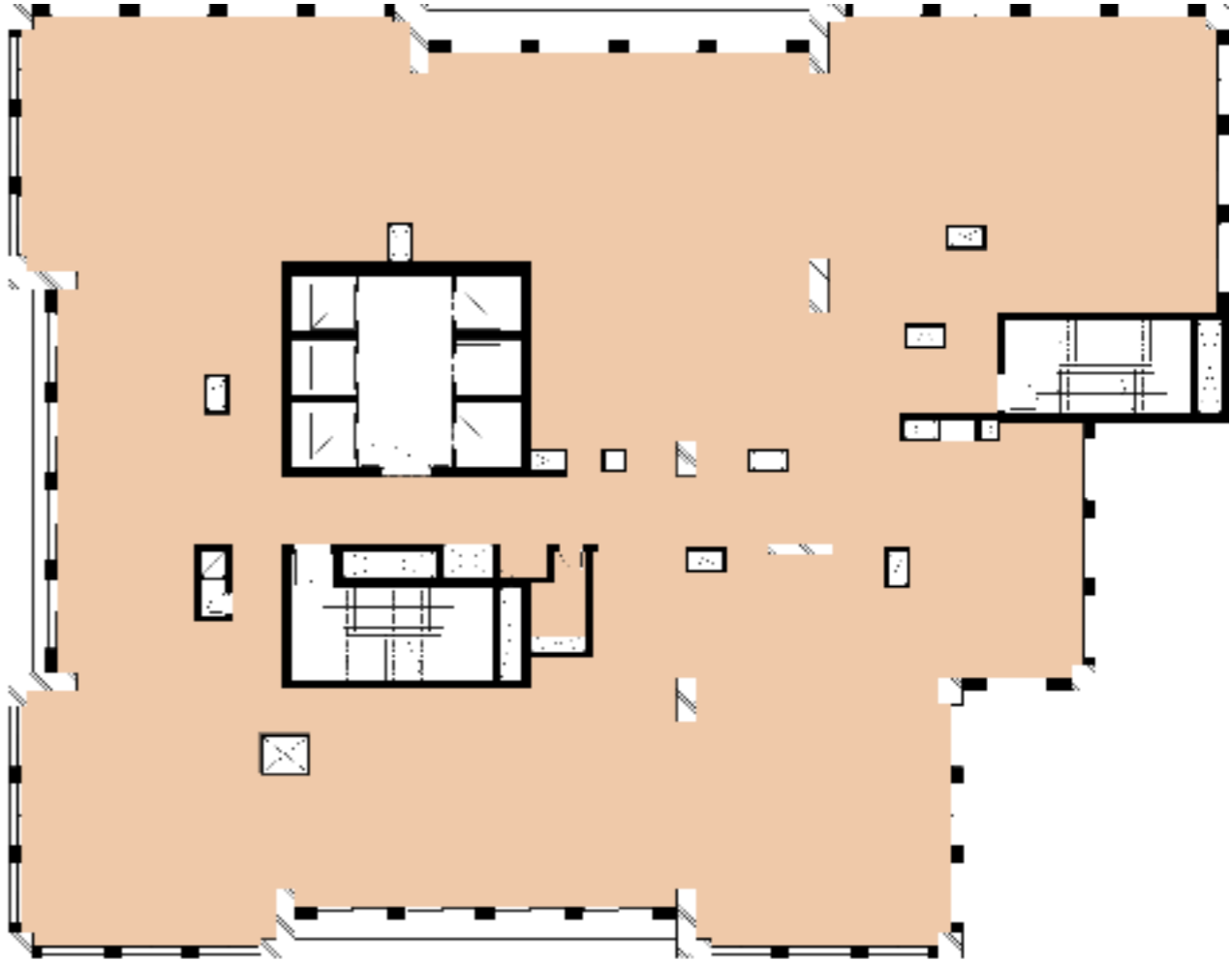
# Fifth Floor

Unit Number	Gross Area (sqm)
M3-5	1062



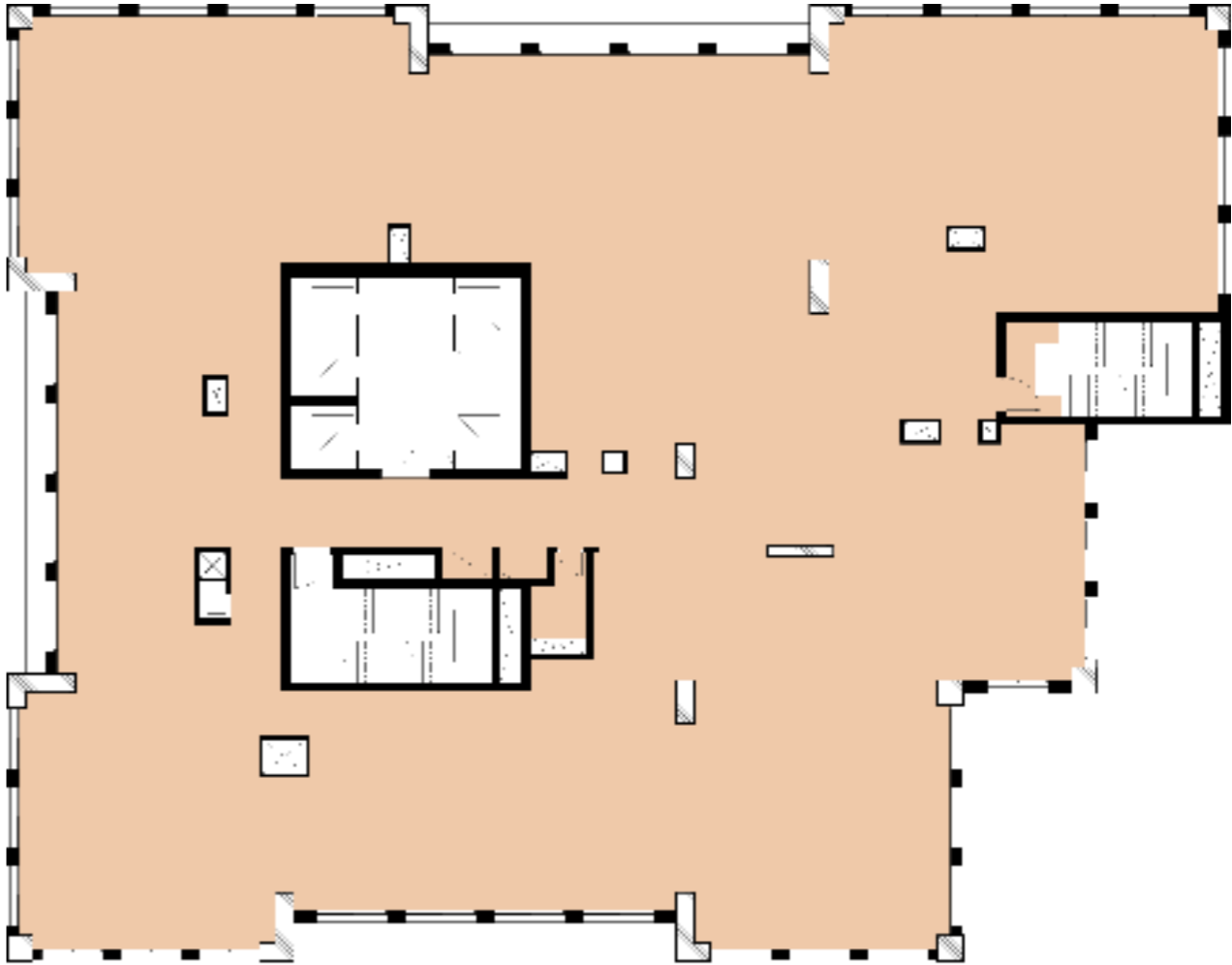
# Sixth Floor

Unit Number	Gross Area (sqm)
M3-6	1168



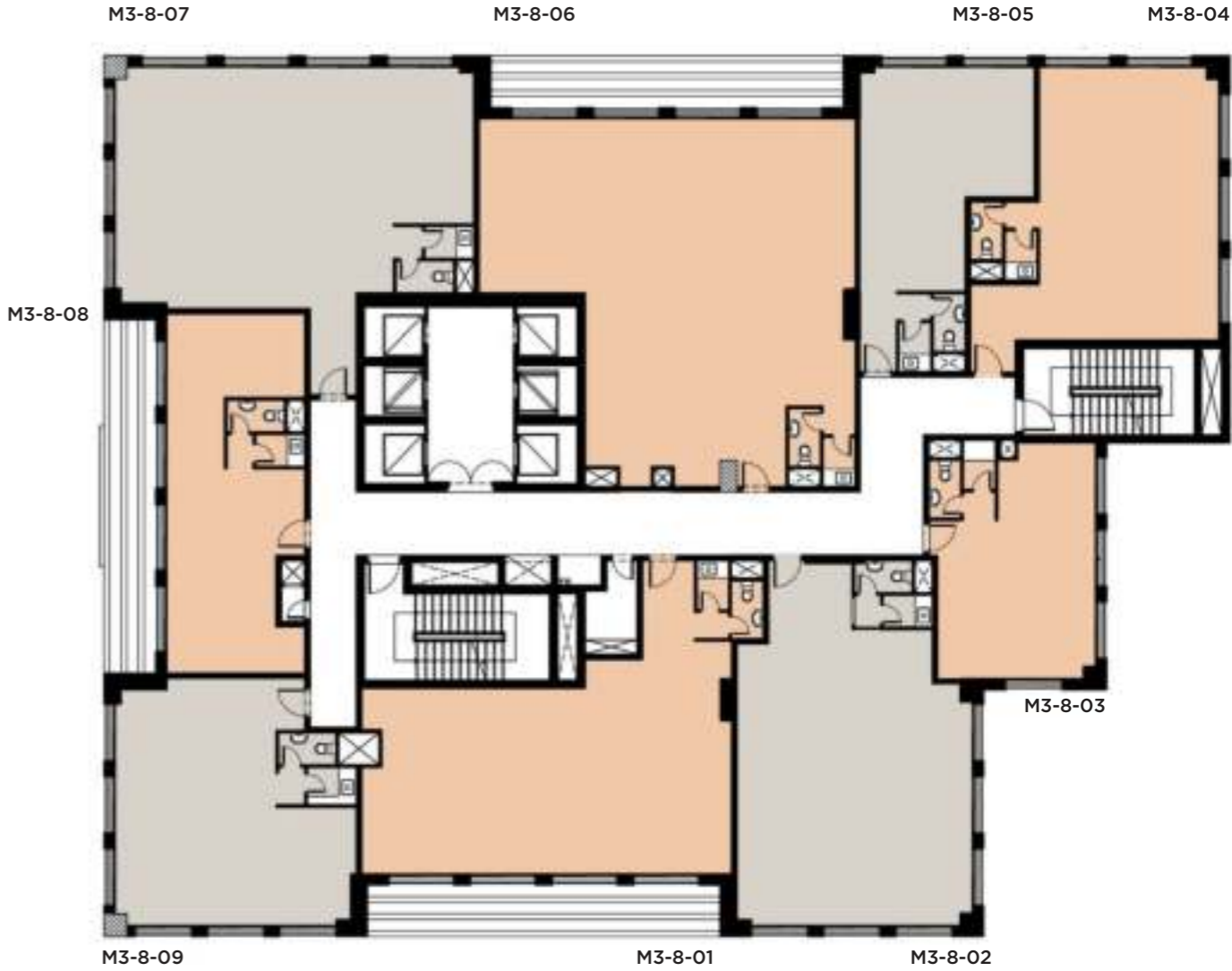
# Seventh Floor

Unit Number	Gross Area (sqm)
M3-7	1062



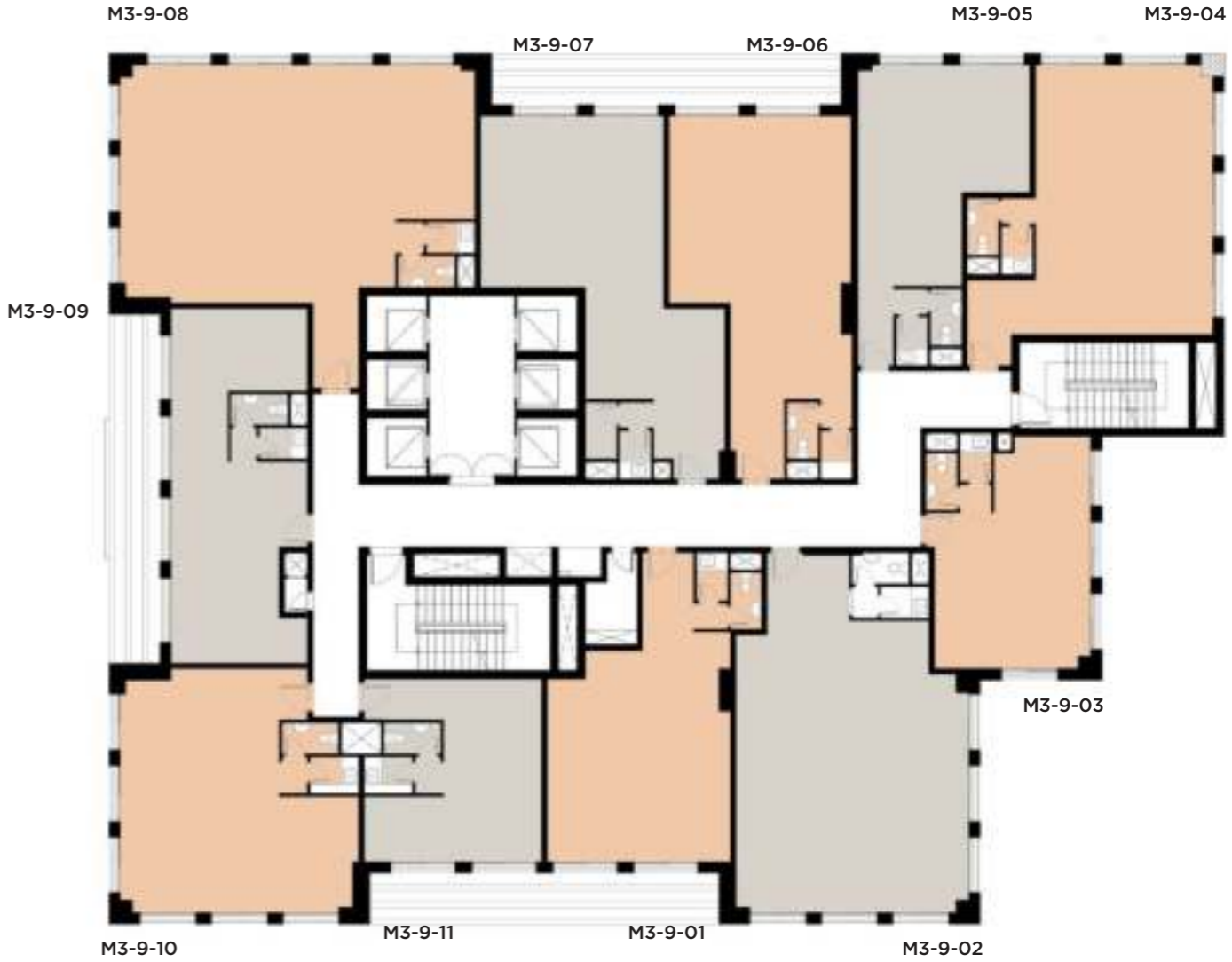
# Eighth Floor

Unit Number	Gross Area (sqm)
M3-8-01	145
M3-8-02	134
M3-8-03	69
M3-8-04	106
M3-8-05	72
M3-8-06	199
M3-8-07	154
M3-8-08	84
M3-8-09	98
<b>Total</b>	<b>1061</b>



# Ninth Floor

Unit Number	Gross Area (sqm)
M3-9-01	87
M3-9-02	134
M3-9-03	69
M3-9-04	106
M3-9-05	72
M3-9-06	98
M3-9-07	102
M3-9-08	154
M3-9-09	84
M3-9-10	98
M3-9-11	59
<b>Total</b>	<b>1063</b>







ARKAN PALM

15760

[arkanpalm.com](http://arkanpalm.com)