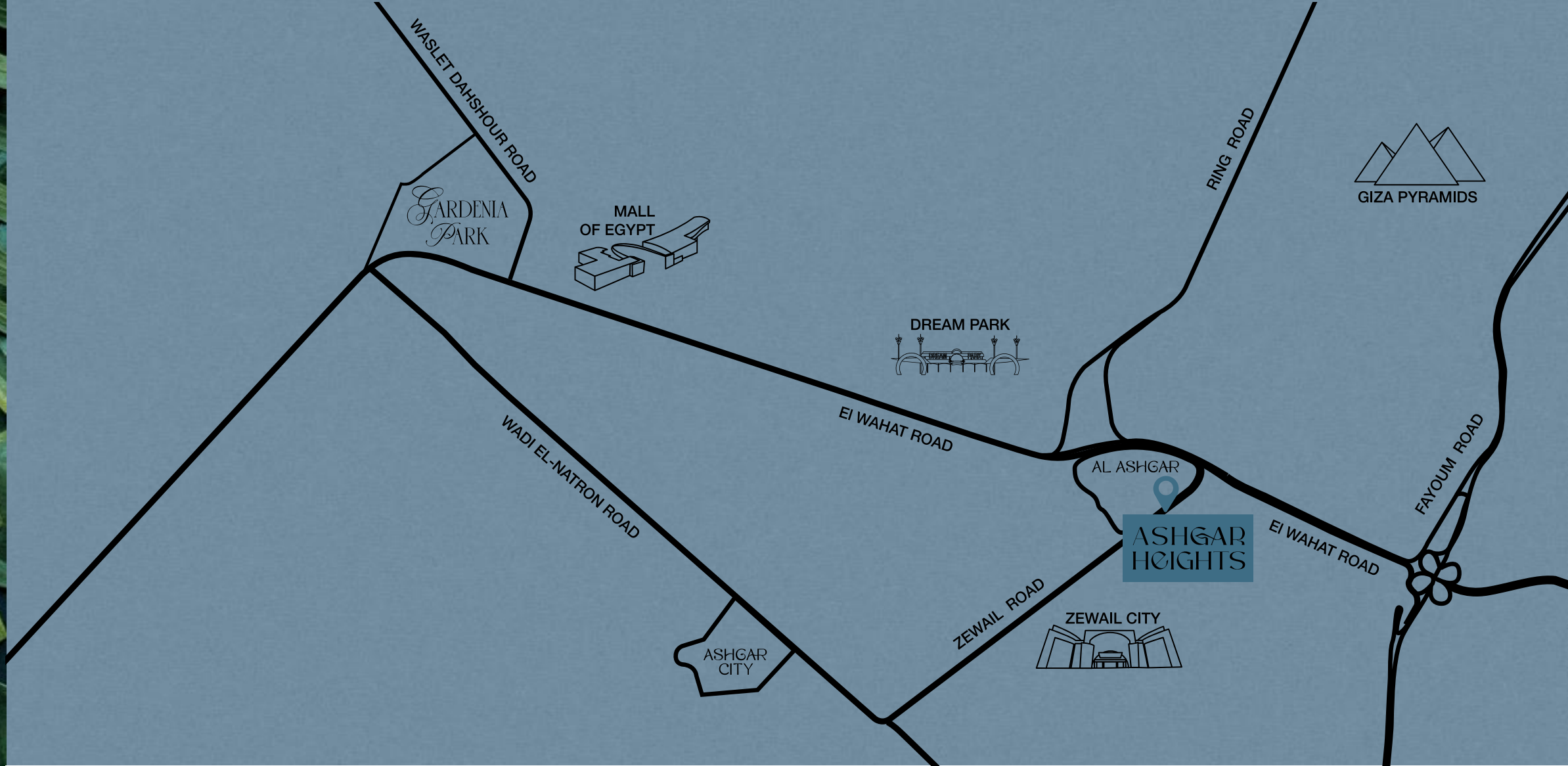


ASHGAR HEIGHTS

Type Z

LOCATION MAP



ZEWAIL CITY

2 MINS

MALL OF EGYPT

5 MINS

MALL OF ARABIA

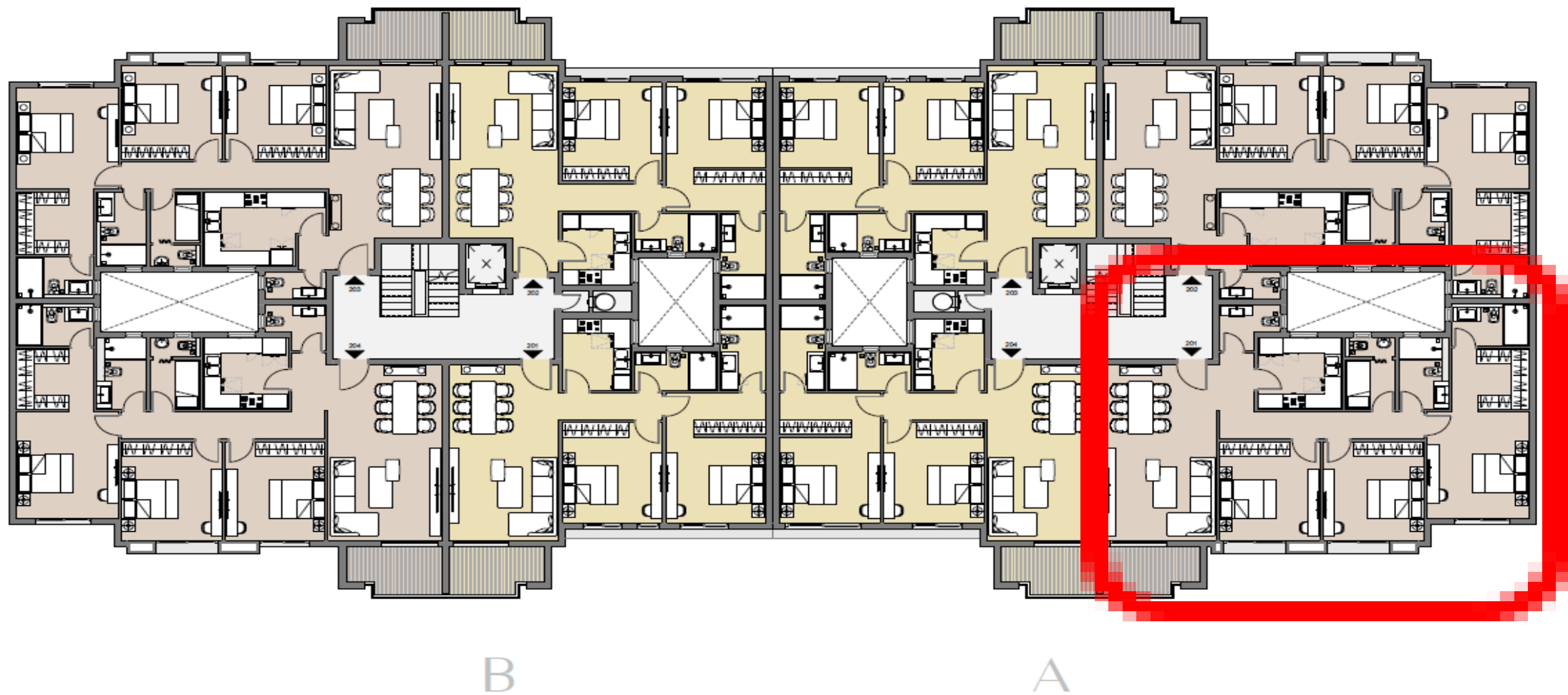
10 MINS

GIZA PYRAMIDS

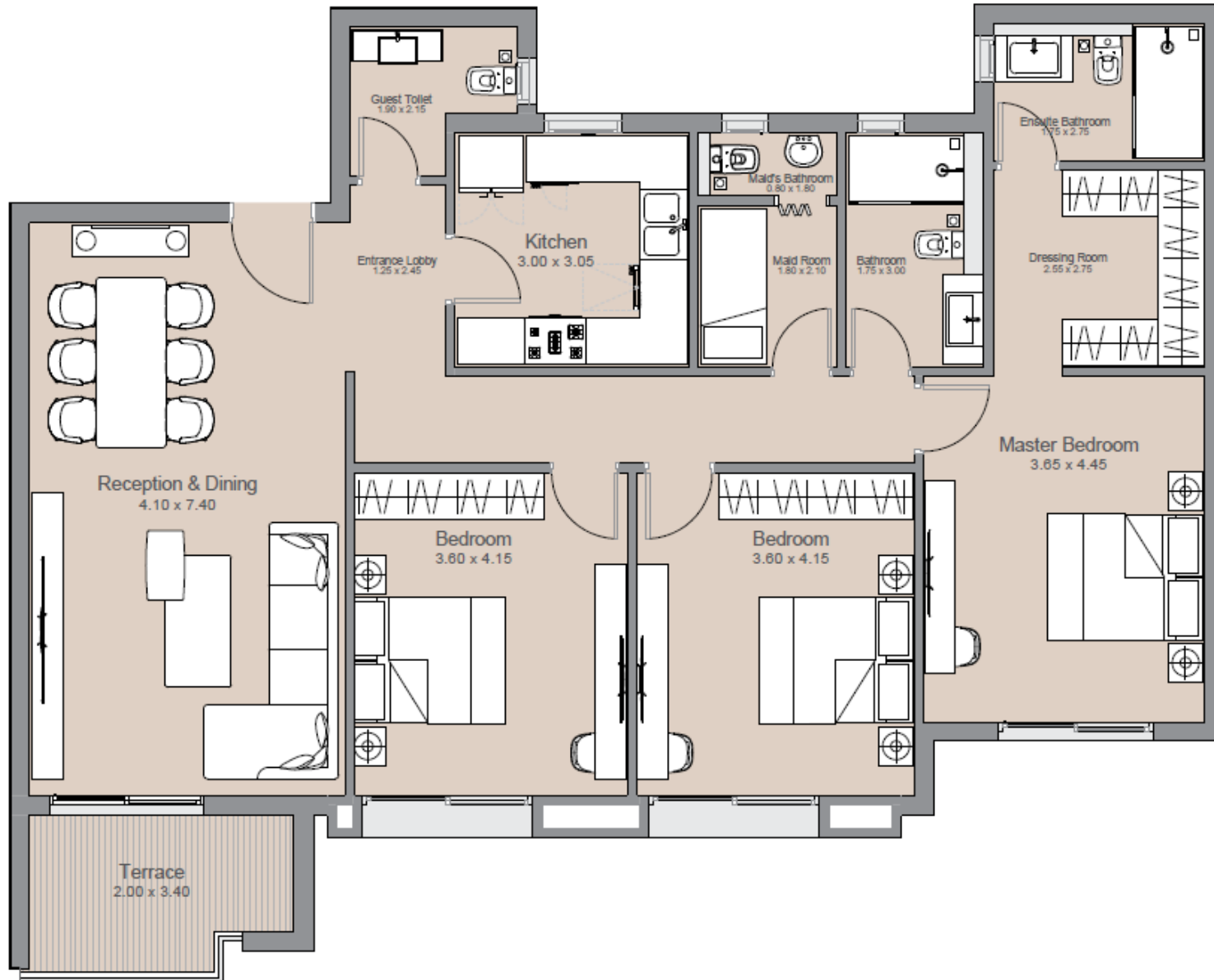
15 MINS



BUILDING TYPE Z
Second Floor



Unit Layout



3A-002-201

Payment Plan

:: 8 Years Payment Plan - Special Payment

Unit # / Code	3A-002-201
Area In Sqms	170
Extra Garden In Sqms	0
Roof Terrace In Sqms	0
Finishing	Semi Finished
Handover	2.5 Years
Club Membership	114,000
Total Unit Price	EGP 4,643,413
Reservation Date	2-Oct-23

Description	Date	Instalments		Maintenance Deposit		Club Fees
		%	Amount	%	Amount	Amount
Reservation	2-Oct-23	10.00%	EGP 464,341			EGP 11,400
1st instalment	2-Jan-24	2.58%	EGP 119,830			EGP 12,825
2nd instalment	2-Apr-24	2.58%	EGP 119,830			EGP 12,825
3rd instalment	2-Jul-24	2.58%	EGP 119,830			EGP 12,825
4th instalment	2-Oct-24	2.58%	EGP 119,830			EGP 12,825
5th instalment	2-Jan-25	2.58%	EGP 119,830			EGP 12,825
6th instalment	2-Apr-25	2.58%	EGP 119,830			EGP 12,825
7th instalment	2-Jul-25	2.58%	EGP 119,830	3%	EGP 139,302	EGP 12,825
8th instalment	2-Oct-25	2.58%	EGP 119,830	3%	EGP 139,302	EGP 12,825
9th instalment	2-Jan-26	2.58%	EGP 119,830	3%	EGP 139,302	
10th instalment	2-Apr-26	10.00%	EGP 464,341			
11th instalment	2-Jul-26	2.58%	EGP 119,830			
12th instalment	2-Oct-26	2.58%	EGP 119,830			
13th instalment	2-Jan-27	2.58%	EGP 119,830			
14th instalment	2-Apr-27	2.58%	EGP 119,830			
15th instalment	2-Jul-27	2.58%	EGP 119,830			
16th instalment	2-Oct-27	2.58%	EGP 119,830			
17th instalment	2-Jan-28	2.58%	EGP 119,830			
18th instalment	2-Apr-28	2.58%	EGP 119,830			
19th instalment	2-Jul-28	2.58%	EGP 119,830			
20th instalment	2-Oct-28	2.58%	EGP 119,830			
21st instalment	2-Jan-29	2.58%	EGP 119,830			
22nd instalment	2-Apr-29	2.58%	EGP 119,830			
23rd instalment	2-Jul-29	2.58%	EGP 119,830			
24th instalment	2-Oct-29	2.58%	EGP 119,830			
25th instalment	2-Jan-30	2.58%	EGP 119,830			
26th instalment	2-Apr-30	2.58%	EGP 119,830			
27th instalment	2-Jul-30	2.58%	EGP 119,830			
28th instalment	2-Oct-30	2.58%	EGP 119,830			
29th instalment	2-Jan-31	2.58%	EGP 119,830			
30th instalment	2-Apr-31	2.58%	EGP 119,830			
31st instalment	2-Jul-31	2.58%	EGP 119,830			
32nd instalment	2-Oct-31	2.58%	EGP 119,830			

Total	100.00%	EGP 4,643,413	9%	EGP 417,907	EGP 114,000
--------------	----------------	----------------------	-----------	--------------------	--------------------

IGI
DEVELOPMENTS

GARDENIA
PARK

ASHGAR
HEIGHTS

AL ASHGAR

ASHGAR
CITY

16124

