



CEO's message

For decades, Hassan Allam Properties has gained a reputation for building and delivering iconic developments, bringing to life the dream of luxury living in Egypt with an unrivalled emphasis on quality and community. As a leading exclusive boutique developer in the region, we are always committed to exceed our clients every expectation by offering unparalleled residential experiences, as well as holiday resorts in prime coastal locations mastering the equation of private luxury and hospitality.

By partnering with leading global names in the industry such as, Divercity Architects and Crystal Lagoons, we've transformed infinite landscapes into dream-like realities as part of an on-going commitment to offer breakthrough concepts that challenge the real estate industry while enriching the lives of our communities.

Today, I take pride in introducing a unique taste of Greece with its beautiful eccentricity in the heart of El Gouna, bringing to life an idyllic waterfront lifestyle and tropical paradise just minutes away from top-notch amenities. Swan Lake El Gouna has been uniquely designed to foster the concept of intimacy supporting a wide visual panorama of natural beauty not found elsewhere. We invite you to become part of our exclusive community, promising another unique getaway well-integrated with the Red Sea's breathtaking scenery.

Sincerely,
Mohamed Allam

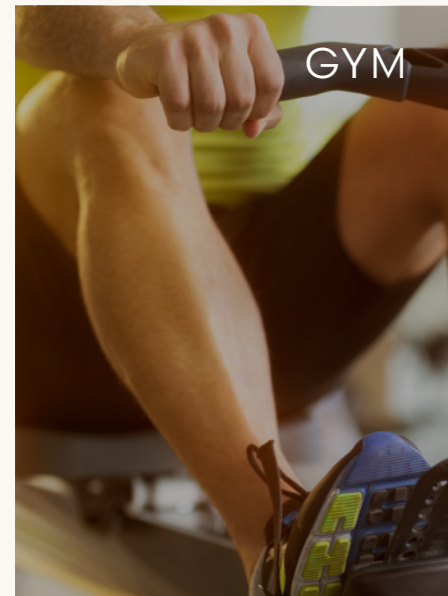


THE HEART OF EL GOUNA

Swan Lake El Gouna is a breathtaking enclave carefully designed with the natural surroundings in mind. Built in the shape of a heart, the project guarantees that all units benefit from soothing crystal lagoon views, sunny rooftops and wooden decks. The innovative concept brings to life a tranquil waterfront lifestyle at every doorstep in an exclusive, family-like environment embraced by impeccable amenities ideal for creating memories that last a lifetime.

THE CLUB HOUSE

Because we want to ensure the comfort of our residents we have designed a clubhouse to cater the needs of our community. Swan Lake El Gouna clubhouse is fully equipped with its own fitness club, Spa and Restaurant to bring all the essential facilities closer to your door step.



GYM



RESTAURANT



SPA



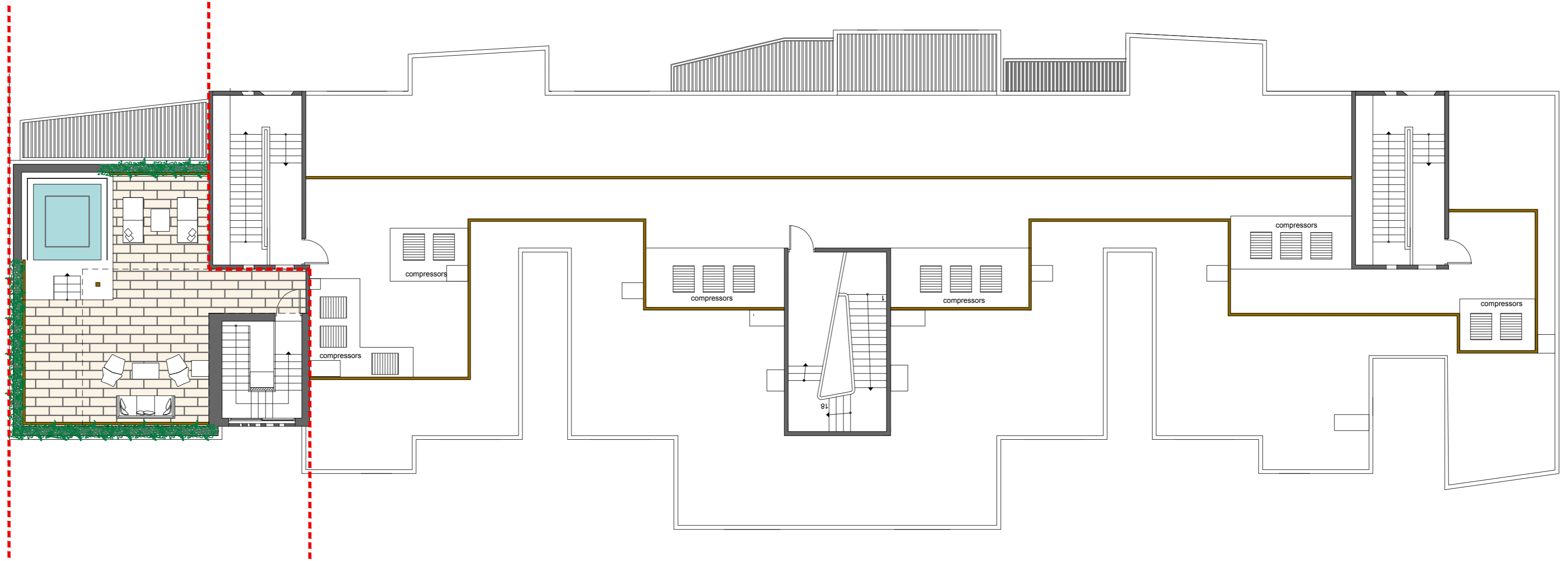
TYPE ONE



TYPE ONE

ROOF FLOOR PLAN.

P-21 Private Roof = 72 m²

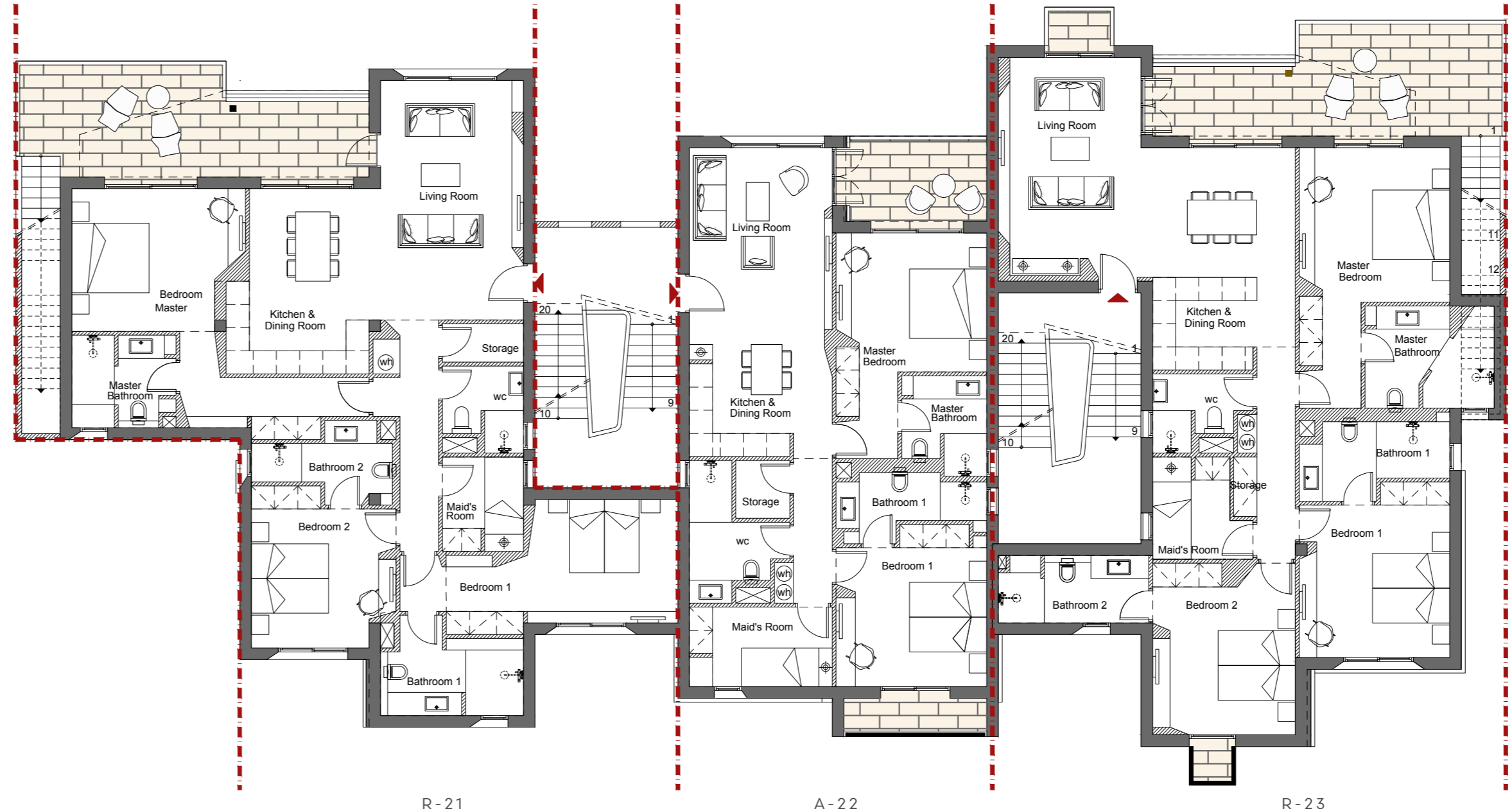


P-21

TYPE TWO



R - 21	BUA = 161 m ² Terrace = 23 m ² Roof = 50 m ²
A - 22	BUA = 111 m ² Terraces = 12 m ²
R - 23	BUA = 160 m ² Terraces = 26 m ² Roof = 50 m ²



BEHIND THE PROJECT



Established in the 1990s, Hassan Allam Properties (HAP) is today one of Egypt's leading real estate developers. We enjoy a large and diversified land bank of residential properties and holiday resorts in prime locations throughout Egypt. We specialize in creating first-class residential and vacation communities in prime locations throughout Egypt. Our goal is to provide an unmatched lifestyle experience to discerning individuals who care about how they live and where they vacation.



At Swan Lake El Gouna, we have created a large sea-water lagoon surrounded by a stretch of white sandy beaches, bringing the beach right to your doorstep. Not only do they add to the majestic views from most homes, but this swimmable lagoon is a safe and exciting place where your kids can have a fun time so close to home.



Divercity is an award-winning architecture and design practice with offices in London and Athens and a wide-ranging portfolio including hotels, housing complexes, private residences, commercial and public spaces around the world. The practice's strong presence in the international architecture and design scene has resulted in a number of prestigious Awards and Distinctions, such as the European Union Prize for Contemporary Architecture - Mies van der Rohe Award (Nominated, 2009 & 2013), the European Hotel Design Award for Hotel Design of the Year (Winner, 2007 & Shortlisted, 2010).



andscape-H. Pangalou and Associates Landscape Architects was founded in Athens in 2004. Their interest focuses on viable landscape processes connected to cultural and experiential effects. Their portfolio includes private and public projects, ranging from large scale master planning to residential projects, from schematic design to construction documents and construction administration. They have participated in international architectural competitions and gained awards and citations.