

HEARTWORK KEY



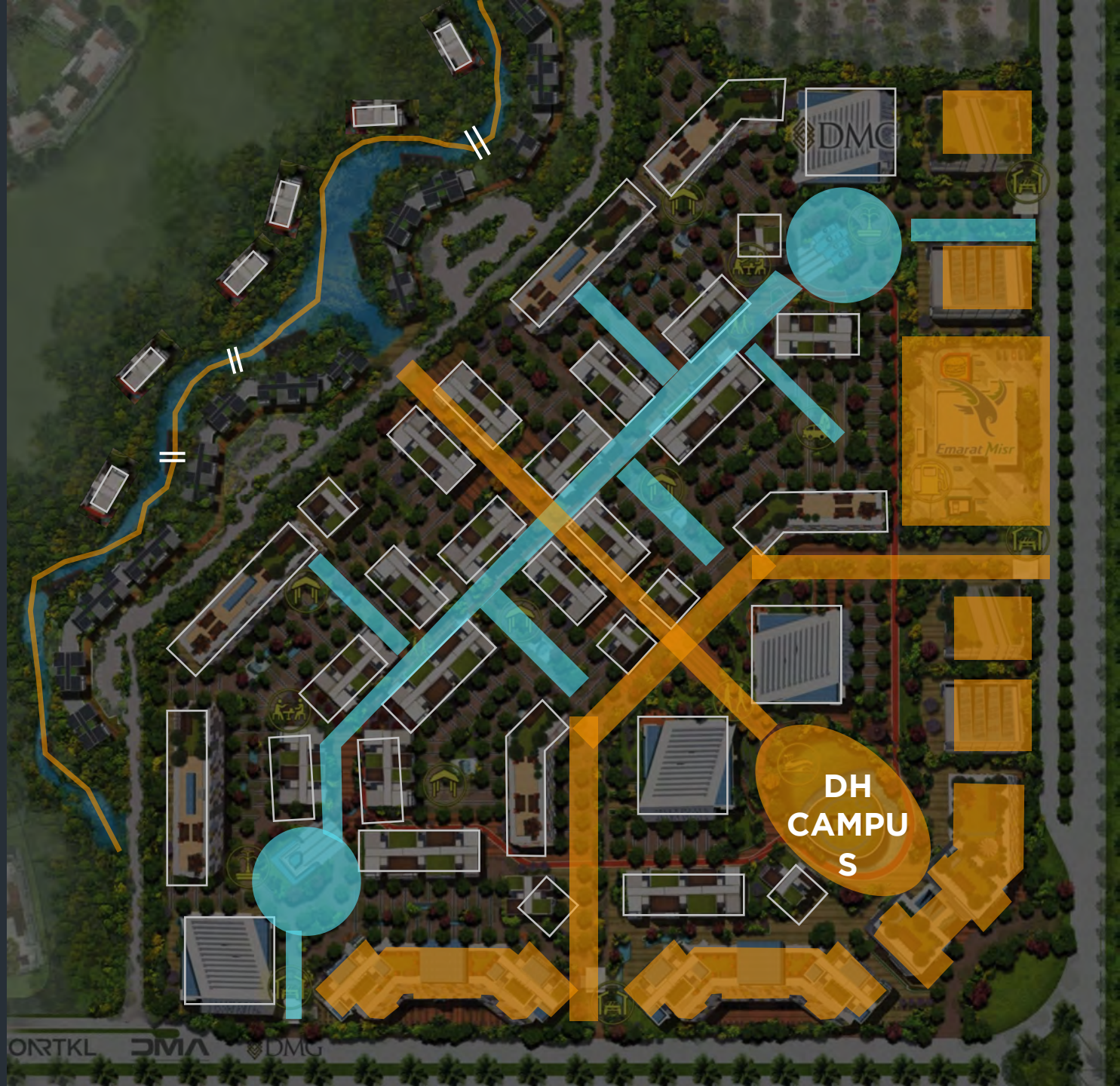
BUILDINGS



COMMERCIAL



OFFICES



HEART WORK FACILITIES



Access Control



24/7 surveillance cameras
for open Spaces



Physical security
service



Standby generators



High speed
internet



Borderless Networking, routing,
switching & security



Triple play



Special Needs
Friendly



Parking system
management



Interactive media



Data Center

BUILDING TYPES

- SHOWROOM - 1
- SHOWROOM - 2
- STRIP MALL
- G & GO
- HQ 5000
- HQ 50 - S
- HQ 50 - L
- HQ 500 - A
- HQ 500 - B
- HQ 500 - C
- HAPPY HUB
- GAS STATION



DH CAMPUS PROGRAM

INDOORS :



Workstations



Shared Value Meeting
Rooms



Training center



Food court

OUTDOORS :



Commercial :
Kiosks & F&B



Demo area & outdoor
coworking spaces



Zen garden



Sports area

DH CAMPUS



SHARED VALUE MEETING ROOMS

THE INSPIRATION BOULEVARD



BUILDING NUMBERS

BUILDING #

TYPE

01	SR
02	SR
03	HQ - 500 - E
04	HQ - 50 - L
05	HQ - 500 - D
06	HQ - 500 - C
07	HQ - 500 - B
08	HQ - 500 - A
09	HQ - 50 - S
10	HQ - 50 - L
11	HQ 5000



PRODUCT MIX - PHASE 1 THE MIND

	Building Count	Total Sellable BUA
HQ-50L	2	15,980
HQ-50S	1	9,000
HQ-500A	1	1,440
HQ-500B	3	6,480
HQ-500C	1	3,280
HQ-5000	1	8,255

HQ500



HQ
500
COMPANY
HAPPY
HEART
SOUL
BODY

C4

PARKING 102 01
PARKING 102 02
PARKING 102 03

HQ500

LUGO

HQ 500 - BUILDING SPECS: CORE & SHELL



**Electricity,
communications and
information tie ins only**



Main entry door for office



Fiber optics connection

HQ50



HQ 50 - BUILDING SPECS: FULLY - FINISHED



Fire fighting system



24/7 surveillance cameras for open Spaces



Quality finished and equipped rest rooms
(ceramic ,paints, false ceilings)



Quality finishing for building core (Marble, false ceilings, paints)



Garbage Room in each floor



Double glazed curtain wall system, aluminum cladding glass windows



External walls :
“ Based on building type”



Quality finished and equipped Pantry in each floor



Fiber optics connection



A/C systems for building cores

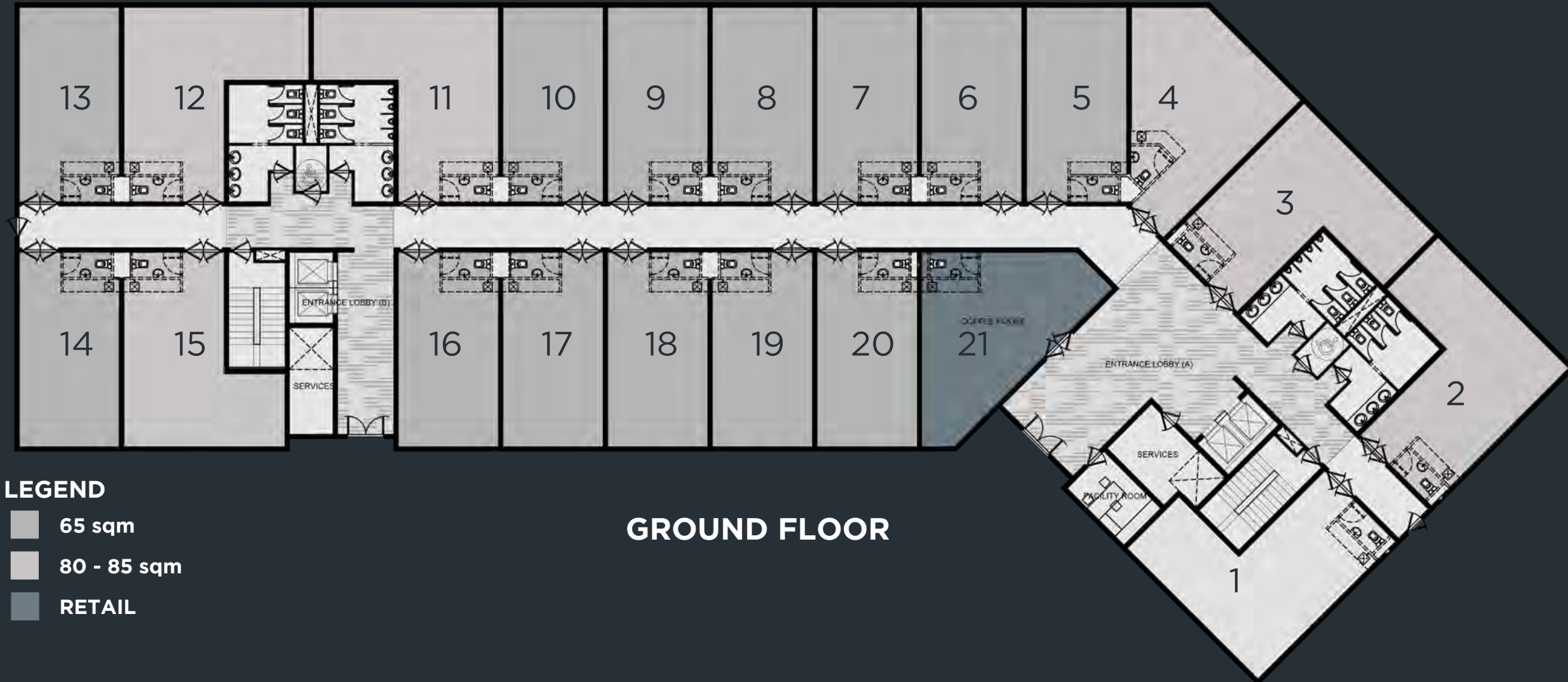


High speed Elevators



Main entry door for office

HQ 50 - L



LEGEND

- 65 sqm
- 80 - 85 sqm
- RETAIL

GROUND FLOOR

HQ 50 - UNITS SPECS: FULLY - FINISHED



Central AC system



**Carpet flooring for
units, paints for all
walls, gypsum board for
ceilings**



Entry door for office



**Each 65 m * 4
connection points**

THANK YOU.