



PALM HILLS  
new cairo  
APARTMENTS



# The Quarry

Such a sublime element. A marvelous mix of blue and green, where the natural quarry. Dig in the pond with a stunning breathtaking quarry garden. Sit back relax; this one will take your breath away, with the sunlight lending you a hand for a picnic, familial warmth. Name it.

# Integrated Self-Sufficient Community

Our community's safety and wellbeing are of importance at Palm Hills New Cairo. It is the land where residents spend their most cherished time and share stories together.

It's a land where you could heighten and tell stories, so land your feet on cobblestone streets with water around and live the greatness; that's our promise.





Villa type **A**



By Architect Shehab A. Mazhar  
Palm Hills Developments retains the right to make alterations

Average Land Area	1147.30 m <sup>2</sup>
Built Up Area (including penthouse area)	691.45 m <sup>2</sup>
Roof Terraces	188.39 m <sup>2</sup>



Villa type **A**



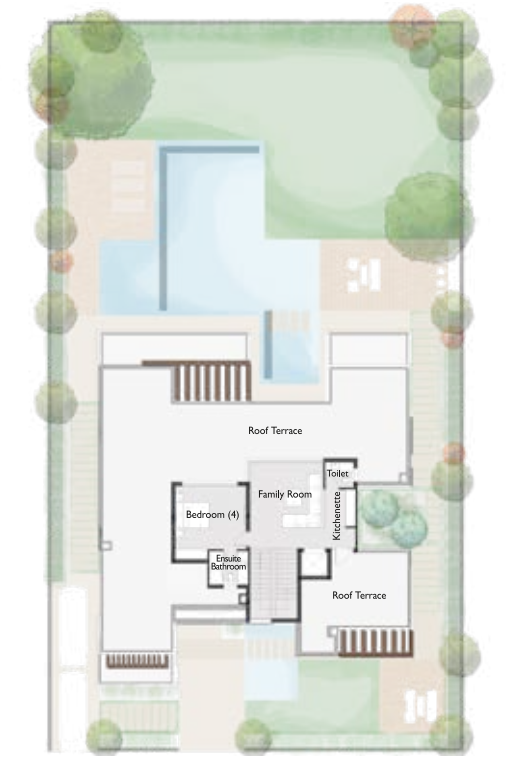
Ground Floor Plan

Ground Floor	
Vestibule	2,75m x 3,40m
Reception - Dining - Terrace	(4,25m x 6,50 m) - (4,25 m x 6,50 m) - (8,50m x 3,65 m)
Kitchen	4,05 m x 6,15 m
Powder Room - Guest Toilet	(1,30 m x 1,20 m) - (1,30 m x 1,80 m)
Guest Bedroom - Ensuite Bathroom	(4,45 m x 4,95 m) - (1,70 m x 3,10 m)
Nanny's Bedroom - Bathroom	(2,35m x 1,80 m) - (1,60 m x 1,80 m)
Driver's Bedroom - Bathroom	(2,20m x 1,90 m) - (1,75 m x 1,90 m)
Vestiaire	1,60 m x 2,60 m
Family Living - Kitchenette	4,45 m x 5,80 m - 2,85 m x 2,70 m
Porch	2,75m x 1,00 m



First Floor Plan

First Floor	
Master Bedroom - Ensuite Bathroom - Dressing	(4,05m x 5,50 m) - (2,70 m x 2,65 m) - (2,70 m x 2,30 m)
Bedroom 1 - Ensuite Bathroom - Terrace	(4,45 m x 4,00 m) - (3,05 m x 2,60 m) - (4,45 m x 1,80m)
Bedroom 2 - Ensuite Bathroom - Terrace	(4,05m x 4,05 m) - (2,70 m x 1,85 m) - (4,20 m x 1,60 m)
Bedroom 3 - Dressing - Ensuite Bathroom - Terrace	(4,45m x 4,40 m) - (1,70m x 1,70 m) - (2,10m x 2,30m) - (4,15 m x 1,30m)
Family Living - Terrace	4,35m x 6,75 m - 24,12 m <sup>2</sup>
Kitchenette	2,15 m x 3,10 m
Laundry	1,90 m x 3,15 m



Penthouse Plan

Penthouse Floor	
Family Living	4,35m x 5,00 m
Toilet	1,70m x 1,60 m
Bedroom 4 - Ensuite Bathroom	(4,20 m x 3,70 m) - (2,15 m x 2,05 m)
Kitchenette	1,70 m x 2,10 m
Roof Terrace	188,39 m <sup>2</sup>

**Disclaimer:**  
1- Renders and accompanying visual materials are not to scale and are intended for illustrative purposes.  
2- All Landscaping is not included in the property and solely for illustrative purposes.  
3- Roof finishes and pergolas are for presentation purposes only and are optional based on client's request.  
4- Palm Hills Developments retains the right to make alterations.



Villa type **B**



Average Land Area	963.40 m2
Built Up Area (including penthouse area)	607.50 m <sup>2</sup>
Roof Terraces	176.19 m <sup>2</sup>

By Architect Shehab A. Mazhar  
Palm Hills Developments retains the right to make alterations



Villa type **B**



Ground Floor Plan

First Floor Plan

Penthouse Plan

Ground Floor	
Vestibule	3,85 m x 3,25 m
Reception - Dining - Terrace	5,00 m x 9,00 m - 4,50m x 5,00 m - 7,15 m x 3,25 m
Kitchen	4,50 m x 4,90 m
Guest Toilet	1,40m x 2,60 m
Guest Bedroom - Ensuite Bathroom - Dressing	(3,75 m x 3,65 m) - (2,60 m x 2,40 m)-(2,60m x 1,85m )
Nanny's Bedroom - Bathroom	(2,85m x 1,70 m) - (1,55 m x 1,70 m)
Driver's Bedroom - Bathroom	(2,85m x 1,70 m) - (1,55 m x 1,70 m)
Family Living	4,55 m x 4,00 m
Porch	2,50m x 3,25 m

First Floor	
Master Bedroom - Ensuite Bathroom - Dressing-Terrace	(5,00 m x 4,40 m) - (3,70 m x 1,95 m) - (3,70 m x 2,40 m)-(6,50m x 3,00m)
Bedroom 1 - Ensuite Bathroom - Dressing -Terrace	(4,50 m x 4,15 m) - (3,20 m x 1,75m) - (3,20 m x 1,80 m)-(4,50m x 2,00m)
Bedroom 2 - Ensuite Bathroom	(4,50m x 4,00 m) - (1,50 m x 3,55 m)
Bedroom 3 - Ensuite Bathroom	(4,40 m x 3,90 m) - (2,00 m x 2,70 m)
Family Living	4,00m x 4,95 m
Kitchenette	1,85 m x 0,60 m
Laundry	2,85 m x 1,60 m

Penthouse Floor	
Family Living	3,59m x 5,10 m
Toilet	1,50 m x 2,95 m
Bedroom 4	4,15 m x 3,60m
Kitchenette	1,90 m x 0,60 m
Roof Terrace	176,19m <sup>2</sup>

**Disclaimer:**  
1- Renders and accompanying visual materials are not to scale and are intended for illustrative purposes.  
2- All Landscaping is not included in the property and solely for illustrative purposes.  
3- Roof finishes and pergolas are for presentation purposes only and are optional based on client's request.  
4- Palm Hills Developments retains the right to make alterations.

Villa type **C**



By Architect Shehab A. Mazhar  
Palm Hills Developments retains the right to make alterations

Average Land Area	785.75 m <sup>2</sup>
Built Up Area (including penthouse area)	518.00 m <sup>2</sup>
Roof Terraces	152.01 m <sup>2</sup>

Villa type **C**



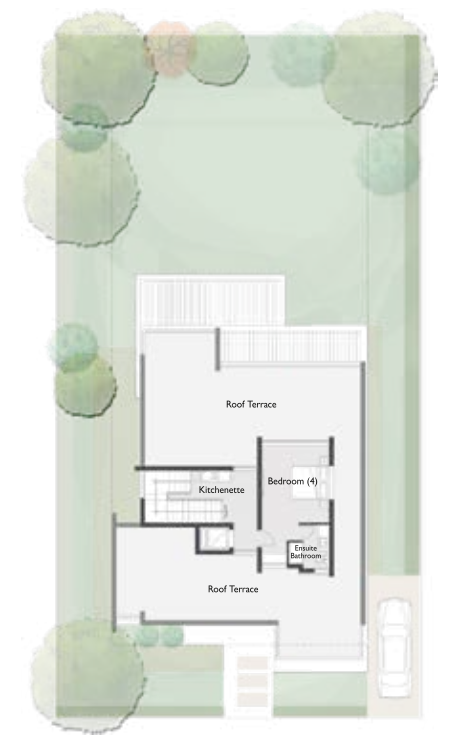
Ground Floor Plan

Ground Floor	
Vestibule	2,20 m x 6,45 m
Reception - Dining - Terrace	(7,95 m x 5,15 m) - (3,90 m x 6,00 m) - (7,70 m x 4,50 m)
Kitchen	4,65 m x 3,95 m
Guest Toilet	(1,00 m x 1,30 m) - (1,60 m x 1,05 m)
Guest Bedroom - Ensuite Bathroom	4,30 m x 5,10 m) - (2,30 m x 2,05 m)
Nanny's Bedroom - Bathroom	(2,90 m x 2,10 m) - (2,80 m x 1,05 m)
Driver's Bedroom - Bathroom	(2,35 m x 2,30 m) - (1,05 m x 2,30 m)
Porch	2,20 m x 2,20 m



First Floor Plan

First Floor	
Master Bedroom - Ensuite Bathroom - Dressing	(4,10 m x 4,20 m) - (2,50 m x 2,75 m) - (2,40 m x 2,05 m)
Bedroom 1 - Ensuite Bathroom - Terrace	(4,60 m x 3,70 m) - (2,50 m x 2,15 m) - (4,60 m x 1,05 m)
Bedroom 2 - Ensuite Bathroom	(3,90 m x 4,50 m) - (2,60 m x 2,45 m)
Bedroom 3 - Ensuite Bathroom	(4,30 m x 5,10 m) - (2,30 m x 2,05 m)
Family Living - Terrace	3,60 m x 3,85 m - 15,60 m <sup>2</sup>
Kitchenette	0,60 m x 1,95 m



Penthouse Plan

Penthouse Floor	
Bedroom 4 - Ensuite Bathroom	(3,70 m x 4,25 m) - ((1,50 m x 2,40 m)+(0,90 m x 1,05 m))
Kitchenette	1,80 m x 0,60 m
Roof Terrace	152,01 m <sup>2</sup>

**Disclaimer:**  
1- Renders and accompanying visual materials are not to scale and are intended for illustrative purposes.  
2- All Landscaping is not included in the property and solely for illustrative purposes.  
3- Roof finishes and pergolas are for presentation purposes only and are optional based on client's request.  
4- Palm Hills Developments retains the right to make alterations.

Villa type **E3**



By Architect Shehab A. Mazhar  
Palm Hills Developments retains the right to make alterations

Average Land Area	522.65 m <sup>2</sup>
Built Up Area (including penthouse area)	385.50 m <sup>2</sup>
Roof Terraces	121 m <sup>2</sup>

Villa type **E3**



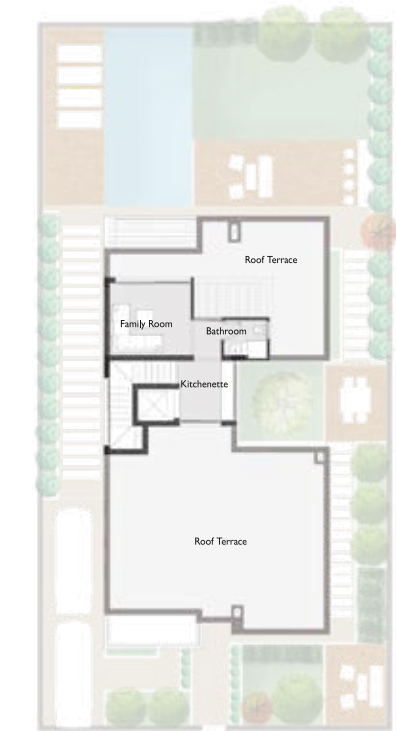
Ground Floor Plan

Ground Floor	
Vestibule	2,05 m x 7,35 m
Reception - Dining	(9,50 m x 4,75 m) - (5,80 m x 3,70 m)
Kitchen	3,60 m x 4,40 m
Guest Toilet	(1,90 m x 1,20 m)
Guest Bedroom - Ensuite Bathroom	(3,60 m x 3,60 m) - (1,60 m x 2,85 m)
Nanny's Bedroom - Bathroom	(2,00 m x 1,70 m) - (1,50 m x 1,70 m)
Driver's Bedroom - Bathroom	(2,00 m x 1,70 m) - (1,35 m x 1,70 m)
Porch	1,95 m x 1,25 m



First Floor Plan

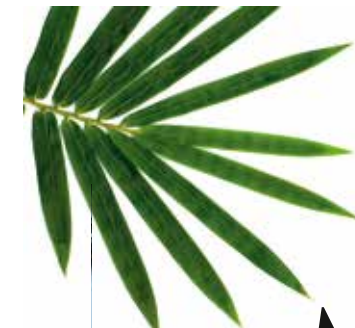
First Floor	
Master Bedroom - Ensuite Bathroom - Dressing	(4,05 m x 4,90 m) - (3,45 m x 2,10 m) - (2,35 m x 2,50 m)
Bedroom 1 - Ensuite Bathroom	(3,60 m x 4,50 m) - (2,45 m x 1,80 m)
Bedroom 2 - Ensuite Bathroom - Dressing	(3,60 m x 3,80 m) - (1,60 m x 2,85 m) - (2,05 m x 2,10 m)
Family Living	5,30 m x 4,75 m
Kitchenette	0,60 m x 2,60 m
Terrace	3,95 m x 2,35 m



Penthouse Plan

Penthouse Floor	
Family Living	3,60 m x 3,60 m
Toilet	2,00 m x 1,65 m
Kitchenette	2,05 m x 0,60 m
Roof Terrace	121,00 m <sup>2</sup>

Disclaimer:  
1- Renders and accompanying visual materials are not to scale and are intended for illustrative purposes.  
2- All Landscaping is not included in the property and solely for illustrative purposes.  
3- Roof finishes and pergolas are for presentation purposes only and are optional based on client's request.  
4- Palm Hills Developments retains the right to make alterations.



Villa type **M**



By Architect Shehab A. Mazhar  
Palm Hills Developments retains the right to make alterations

Average Land Area	295 m <sup>2</sup>
Built Up Area (including penthouse area)	254.45 m <sup>2</sup>
Roof Terraces	83.65 m <sup>2</sup>



Villa type **M**



Ground Floor Plan

Ground Floor	
Vestibule	1,55m x 4,50m
Reception - Dining	7,55m x 6,65 m
Kitchen	3,50 m x 3,20 m
Powder Room - Guest Toilet	(1,70 m x 1,10 m) - (1,65 m x 1,80 m)
Nanny's Bedroom - Bathroom	(1,85m x 2,45 m) - (1,85 m x 1,30 m)
Porch	1,50m x 1,65 m



First Floor Plan

First Floor	
Master Bedroom - Ensuite Bathroom - Dressing	(3,85 m x 4,30 m) - (1,65 m x 2,90 m) - (1,90 m x 1,60 m)
Bedroom 1	3,60 m x 3,60 m
Bedroom 2	3,60m x 4,50 m
Bathroom	2,40m x 1,70 m)
Family Living	3,60m x 4,20 m
Kitchenette	0,60 m x 2,35 m
Terrace	3,70 m x 1,50 m



Penthouse Plan

Penthouse Floor	
Family Living	3,10m x 3,25 m
Toilet	1,15m x 2,40 m
Roof Terrace	83,70 m <sup>2</sup>

**Disclaimer:**  
1- Renders and accompanying visual materials are not to scale and are intended for illustrative purposes.  
2- All Landscaping is not included in the property and solely for illustrative purposes.  
3- Roof finishes and pergolas are for presentation purposes only and are optional based on client's request.  
4- Palm Hills Developments retains the right to make alterations.





# TWIN HOUSE



By Architect Shehab A. Mazhar  
Palm Hills Developments retains the right to make alterations

Average Land Area	337.72 m <sup>2</sup>
Built Up Area (including penthouse area)	298.85 m <sup>2</sup>
Roof Terraces	88.00 m <sup>2</sup>

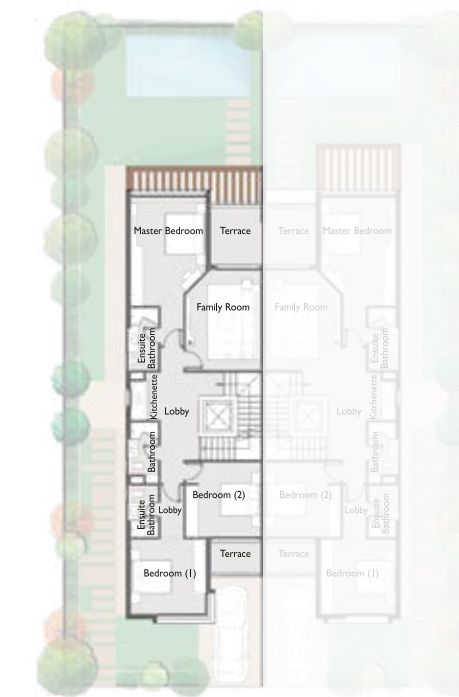


# TWIN HOUSE



Ground Floor Plan

Ground Floor	
Vestibule	2,35 m x 2,95 m
Reception - Dining - Terrace	(6,25 m x 4,50 m) - (6,25 m x 3,25 m) - (6,50 m x 1,75 m)
Kitchen	4,50 m x 3,90 m
Guest Toilet	(1,85 m x 1,45 m)
Nanny's Bedroom - Bathroom	(2,15 m x 2,45 m) - (1,65 m x 1,60 m)
Driver's Bedroom - Bathroom	(1,75 m x 2,40 m) - (2,65 m x 1,20 m)
Porch	0,85 m x 2,35 m



First Floor Plan

First Floor	
Master Bedroom - Ensuite Bathroom	((3,60 m x 4,00 m)+(2,55 m x 1,25 m)) - (1,65 m x 3,00 m)
Bedroom 1 - Ensuite Bathroom	(3,60 m x 3,60 m) - (1,65 m x 2,50 m)
Bedroom 2 - Ensuite Bathroom - Terrace	(3,60 m x 3,60 m) - (2,40 m x 1,60 m)
Bathroom	(1,65 m x 2,50 m)
Family Living - Terrace	(3,60 m x 4,85 m) - (2,45 m x 2,80 m)
Kitchenette	0,80 m x 1,85 m



Penthouse Plan

Penthouse Floor	
Family Living	3,30 m x 3,50 m
Toilet	1,70 m x 1,75 m
Roof Terrace	88,00 m <sup>2</sup>

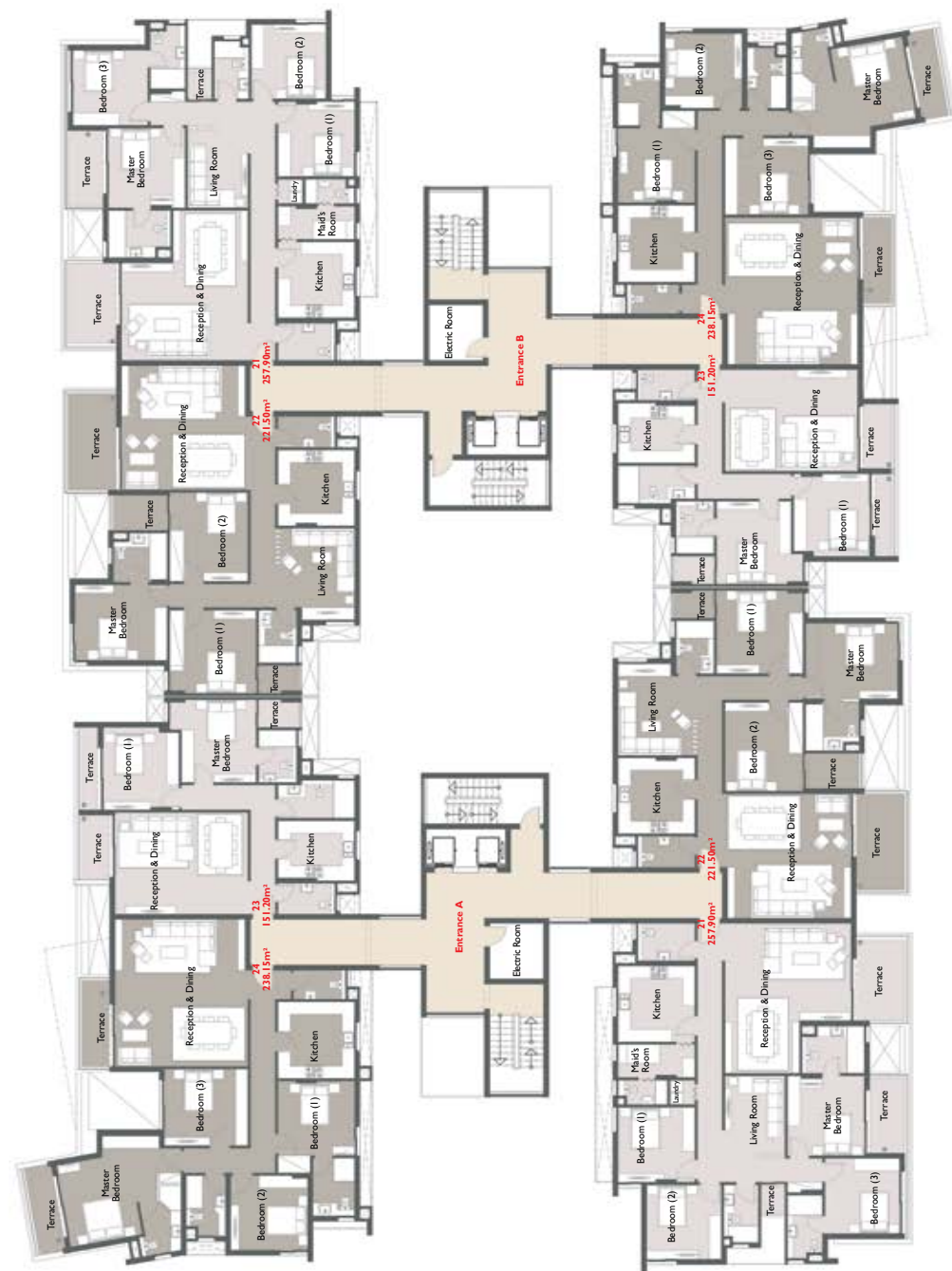
**Disclaimer:**  
1- Renders and accompanying visual materials are not to scale and are intended for illustrative purposes.  
2- All Landscaping is not included in the property and solely for illustrative purposes.  
3- Roof finishes and pergolas are for presentation purposes only and are optional based on client's request.  
4- Palm Hills Developments retains the right to make alterations.



Type A3



**Type A3 Second Floor Plan**



**Second floor**

<b>Apartment 21</b>	
<b>Builtup Area</b>	<b>257.90 m<sup>2</sup></b>
Reception - Dining	(2.55 m x 3.60 m) - (4.70 m x 6.10 m)
Kitchen	3.65 m x 3.70 m
Guest Toilet	1.80 m x 2.75 m
Terrace	3.90 m x 2.35 m
Master Bedroom - Ensuite Bathroom - Terrace	(3.85 m x 3.70 m) - (2.30 m x 3.00 m) - (3.65 m x 1.70 m)
Bedroom 1	3.60 m x 3.70 m
Bedroom 2	3.60 m x 3.60 m
Bedroom 3 - Bathroom	(3.65 m x 3.60 m) - (3.05 m x 1.70 m)
Shared Bathroom	2.80 m x 1.65 m
Maid's Room - Bathroom	(1.60 m x 3.70 m) - (1.20 m x 2.40 m)
Living Room-Terrace	(3.75 m x 2.90 m) - (1.30 m x 1.15 m)
Laundry	1.20 m x 1.20 m

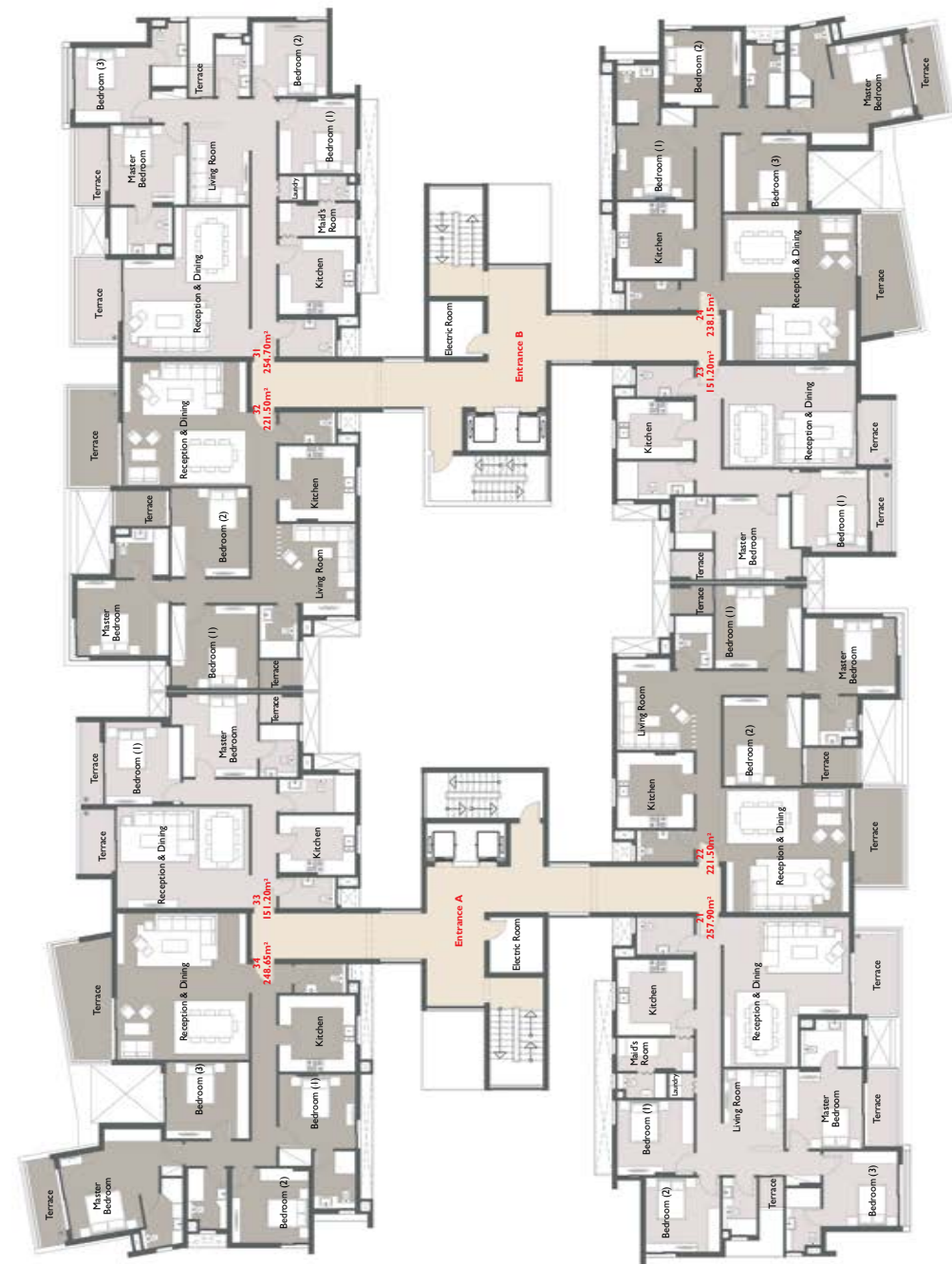
<b>Apartment 22</b>	
<b>Builtup Area</b>	<b>221.50 m<sup>2</sup></b>
Reception - Dining	6.00 m x 5.95 m
Kitchen	3.65 m x 3.70 m
Guest Toilet	1.50 m x 2.75 m
Terrace	4.65 m x 2.35 m
Master Bedroom - Ensuite Bathroom	(3.65 m x 4.45 m) - (2.40 m x 2.60 m)
Bedroom 1 - Terrace	(4.00 m x 4.15 m) - (1.35 m x 1.95 m)
Bedroom 2 - Terrace	(4.30 m x 3.75 m) - (1.70 m x 2.60 m)
Shared Bathroom	2.55 m x 1.80 m
Living Room	4.40 m x 3.60 m

<b>Apartment 23</b>	
<b>Built up Area</b>	<b>151.20 m<sup>2</sup></b>
Reception - Dining	4.90 m x 6.40 m
Kitchen	2.90 m x 3.70 m
Guest Toilet	1.50 m x 2.75 m
Terrace	3.10 m x 1.50 m
Master Bedroom - Ensuite Bathroom - Terrace	(4.00 m x 3.60 m) - (2.50 m x 1.80 m) - (1.35 m x 1.95 m)
Bedroom 1 - Terrace	(4.00 m x 3.65 m) - (4.00 m x 0.80 m)
Shared Bathroom	1.85 m x 3.70 m

<b>Apartment 24</b>	
<b>Built up Area</b>	<b>238.15 m<sup>2</sup></b>
Reception - Dining	7.10 m x 6.40 m
Kitchen	3.70 m x 3.70 m
Guest Toilet	1.40 m x 2.50 m
Terrace	4.15 m x 1.35 m
Master Bedroom - Ensuite Bathroom - Terrace	(4.00m x 3.50m) - (1.05m x 2.75m) - (3.30m x 1.90m) - (4.25m x 1.30m)
Bedroom 1 - Bathroom	(3.60 m x 3.70 m) - (2.80 m x 2.00 m)
Bedroom 2	3.60 m x 3.70 m
Bedroom 3	3.70 m x 4.00 m
Shared Bathroom	2.90 m x 1.90 m

**Disclaimer:**  
 1- Renders and accompanying visual materials are not to scale and are intended for illustrative purposes.  
 2- All Landscaping is not included in the property and solely for illustrative purposes.  
 3- Roof finishes and pergolas are for presentation purposes only and are optional based on clients request.  
 4- Palm Hills Developments retains the right to make alterations.

**Type A3 Third Floor Plan**



**Third floor**

<b>Apartment 31</b>	
<b>Builtup Area</b>	<b>254.70 m<sup>2</sup></b>
Reception - Dining	(2.55 m x 3.60 m) - (4.70 m x 6.10 m)
Kitchen	3.65 m x 3.70 m
Guest Toilet	1.80 m x 2.75 m
Terrace	3.90 m x 2.00 m
Master Bedroom - Ensuite Bathroom - Terrace	(3.85 m x 3.70 m) - (2.30 m x 3.00 m) - (3.65 m x 1.35 m)
Bedroom 1	3.60 m x 3.70 m
Bedroom 2	3.60 m x 3.60 m
Bedroom 3 - Bathroom	(3.65 m x 3.60 m) - (3.05 m x 1.70 m)
Shared Bathroom	2.80 m x 1.65 m
Living Room - Terrace	(3.75 m x 2.90 m) - (1.30 m x 1.15 m)
Laundry	1.20 m x 1.20 m
Maids Room-Bathroom	(1.60 m x 3.70 m) - (1.20 m x 2.40 m)

<b>Apartment 32</b>	
<b>Builtup Area</b>	<b>221.50 m<sup>2</sup></b>
Reception - Dining	6.00 m x 5.95 m
Kitchen	3.65 m x 3.70 m
Guest Toilet	1.50 m x 2.75 m
Terrace	4.65 m x 2.35 m
Master Bedroom - Ensuite Bathroom	(3.65 m x 4.45 m) - (2.40 m x 2.60 m)
Bedroom 1 - Terrace	(4.00 m x 4.15 m) - (1.35 m x 1.95 m)
Bedroom 2 - Terrace	(4.30 m x 3.75 m) - (1.70 m x 2.60 m)
Shared Bathroom	2.55 m x 1.80 m
Living Room	4.40 m x 3.60 m

<b>Apartment 33</b>	
<b>Builtup Area</b>	<b>151.20 m<sup>2</sup></b>
Reception - Dining	4.90 m x 6.40 m
Kitchen	2.90 m x 3.70 m
Guest Toilet	1.50 m x 2.75 m
Terrace	3.15 m x 1.35 m
Master Bedroom - Ensuite Bathroom - Terrace	(4.00 m x 3.60 m) - (2.50 m x 1.80 m) - (1.35 m x 1.95 m)
Bedroom 1 - Terrace	(4.00 m x 3.65 m) - (4.00 m x 0.80 m)
Shared Bathroom	1.85 m x 3.70 m

<b>Apartment 34</b>	
<b>Builtup Area</b>	<b>248.65 m<sup>2</sup></b>
Reception - Dining	7.10 m x 6.40 m
Kitchen	3.70 m x 3.70 m
Guest Toilet	1.40 m x 2.50 m
Terrace	5.70 m x 2.55 m
Master Bedroom - Ensuite Bathroom - Terrace	(4.00m x3.50m) - (1.05mx2.75m) - (3.30m x 1.90m)-(4.25mx1.30m)
Bedroom 1 - Bathroom	(3.60 m x 3.70 m) - (2.80 m x 2.00 m)
Bedroom 2	3.60 m x 3.70 m
Bedroom 3	3.70 m x 4.00 m
Shared Bathroom	2.90 m x 1.90 m

**Disclaimer:**  
 1- Renders and accompanying visual materials are not to scale and are intended for illustrative purposes.  
 2- All Landscaping is not included in the property and solely for illustrative purposes.  
 3- Roof finishes and pergolas are for presentation purposes only and are optional based on clients request.  
 4- Palm Hills Developments retains the right to make alterations.

## Type A3 Fifth Floor Plan



### Fifth floor

#### Apartment 51

<b>Builtup Area</b>	<b>254.70 m<sup>2</sup></b>
Reception - Dining	(2.55 m x 3.60 m) - (4.70 m x 6.10 m)
Kitchen	3.65 m x 3.70 m
Guest Toilet	1.80 m x 2.75 m
Terrace	3.90 m x 2.00 m
Master Bedroom - Ensuite Bathroom - Terrace	(3.85 m x 3.70 m) - (2.30 m x 3.00 m) - (3.65 m x 1.35 m)
Bedroom 1	3.60 m x 3.70 m
Bedroom 2	3.60 m x 3.60 m
Bedroom 3 - Bathroom	(3.65 m x 3.60 m) - (3.05 m x 1.70 m)
Shared Bathroom	2.80 m x 1.65 m
Laundry	1.20 m x 1.20 m
Maid's Room - Bathroom	(1.60 m x 3.70 m) - (1.20 m x 2.40 m)
Living Room - Terrace	(3.75 m x 2.90 m) - (1.30 m x 1.15 m)

#### Apartment 52

<b>Builtup Area</b>	<b>223.00 m<sup>2</sup></b>
Reception - Dining	6.00 m x 5.95 m
Kitchen	3.65 m x 3.70 m
Guest Toilet	1.50 m x 2.75 m
Terrace	4.55 m x 2.25 m
Master Bedroom - Ensuite Bathroom	(3.90 m x 4.45 m) - (2.40 m x 2.60 m)
Bedroom 1 - Terrace	(4.00 m x 4.15 m) - (1.35 m x 1.95 m)
Bedroom 2 - Terrace	(4.30 m x 3.75 m) - (1.70 m x 2.60 m)
Living Room	4.40 m x 3.55 m
Shared Bathroom	2.55 m x 1.80 m

#### Apartment 53

<b>Builtup Area</b>	<b>151.20 m<sup>2</sup></b>
Reception - Dining	4.90 m x 6.40 m
Kitchen	2.90 m x 3.70 m
Guest Toilet	1.50 m x 2.75 m
Terrace	3.00 m x 1.35 m
Master Bedroom - Ensuite Bathroom - Terrace	(4.00 m x 3.60 m) - (2.50 m x 1.80 m) - (1.35 m x 1.95 m)
Bedroom 1 - Terrace	(3.75 m x 3.65 m) - (3.90 m x 0.80 m)
Shared Bathroom	1.85 m x 3.70 m

#### Apartment 54

<b>Builtup Area</b>	<b>248.65 m<sup>2</sup></b>
Reception - Dining	7.10 m x 6.40 m
Kitchen	3.70 m x 3.70 m
Guest Toilet	1.40 m x 2.50 m
Terrace	5.80 m x 2.80 m
Master Bedroom - Ensuite Bathroom - Terrace	(4.00m x 3.50m) - (1.10m x 2.75m) - (3.30m x 1.90m) - (4.25m x 1.30m)
Bedroom 1 - Bathroom	(3.60 m x 3.70 m) - (2.80 m x 2.00 m)
Bedroom 2	(3.60 m x 3.70 m)
Bedroom 3	3.70 m x 4.00 m
Shared Bathroom	2.90 m x 1.90 m

#### Disclaimer:

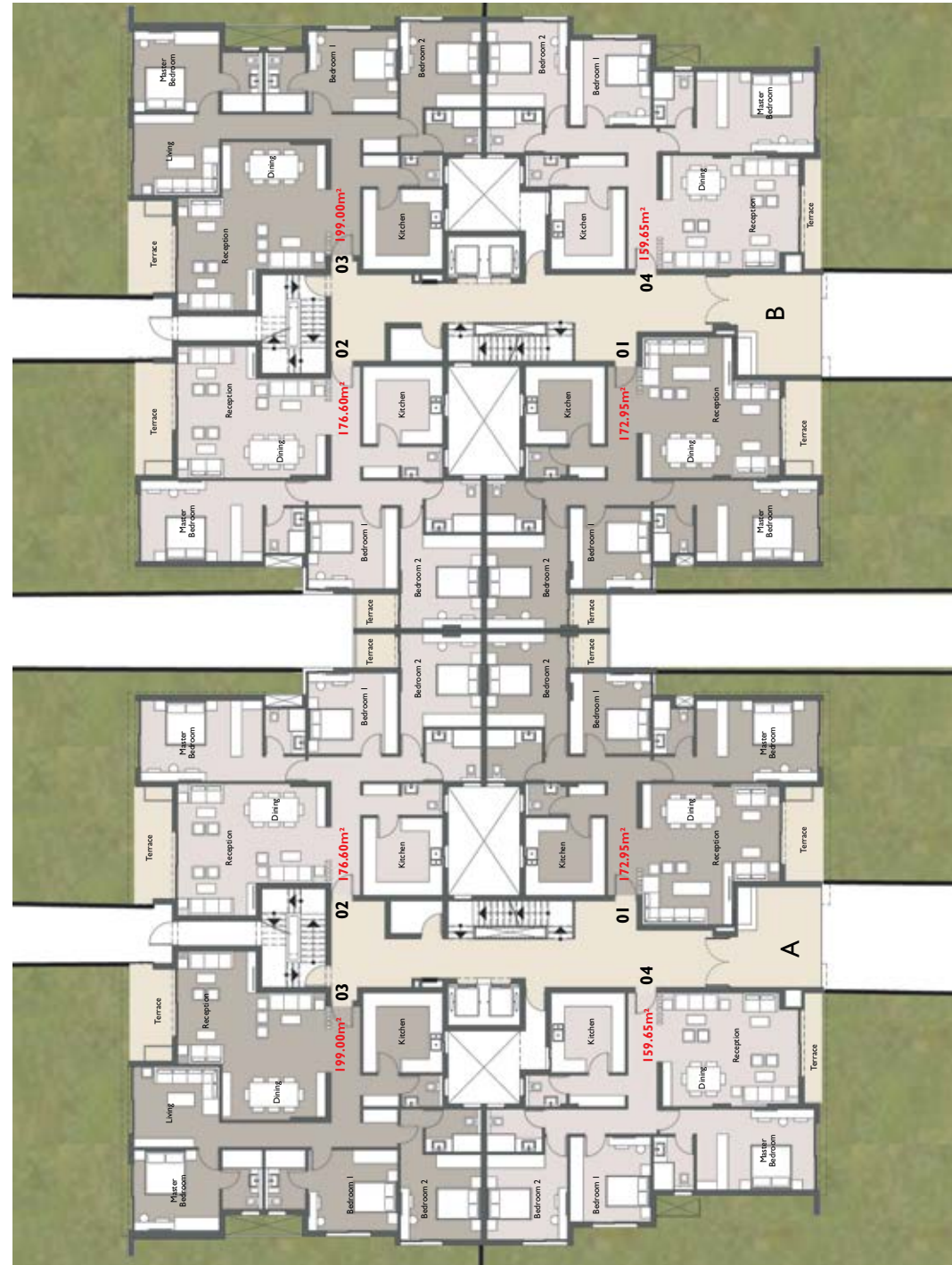
- 1- Renders and accompanying visual materials are not to scale and are intended for illustrative purposes.
- 2- All Landscaping is not included in the property and solely for illustrative purposes.
- 3- Roof finishes and pergolas are for presentation purposes only and are optional based on clients request.
- 4- Palm Hills Developments retains the right to make alterations.



Type **B3**



## Type B3 Ground Floor Plan



### Ground floor

Apartment 01	
<b>Builtup Area</b>	<b>172.95 m<sup>2</sup></b>
Reception - Dining	( 6.30 m x 4.00m) - (4.35m x 2.10m)
Kitchen	3.45mx3.55m
Guest Toilet	1.40mx1.85m
FOYER	5.10 m x 1.30m
Master Bedroom -DRESSING - Ensuite Bathroom	(3.60 m x 4.00 m)-(2.50mx1.40m)- (2.40m x 1.80m)
Bedroom 1	(3.60 m x 3.60 m)
Bedroom 2-terrace	(4.15 m x3.60m)- ( 1.50mx1.70m)
Shared Bathroom	(2.30 m x 2.50 m)
Terrace	(4.20mx1.70m)

Apartment 02	
<b>Builtup Area</b>	<b>176.60 m<sup>2</sup></b>
Reception - Dining	( 5.90 m x 3.50m) - (4.45m x 3.10m)
Kitchen	3.45mx3.55m
Guest Toilet	1.40mx1.85m
FOYER	5.10 m x 1.30m
Master Bedroom -DRESSING - Ensuite Bathroom	(3.60 m x 4.00 m)-(2.50mx1.40m)- (2.00m x 1.80m)
Bedroom 1	(3.60 m x 4.00 m)
Bedroom 2-terrace	(4.15 m x3.60m)- ( 1.50mx1.75m)
Shared Bathroom	(2.30 m x 2.50 m)
Terrace	(5.25mx1.65m)

Apartment 03	
<b>Builtup Area</b>	<b>199.00 m<sup>2</sup></b>
Reception - Dining	( 5.05 m x 3.50 m) -(5.70mx3.10m)
Kitchen	3.55mx3.55m
Guest Toilet	1.40mx1.85m
FOYER	5.20 m x 1.30m
Master Bedroom - Ensuite Bathroom	(3.60 m x 3.80 m)-(2.65m x 1.80m)
Bedroom 1-bathroom	(3.60 m x 4.00 m) -(2.65mx1.80m)
Bedroom 2-bathroom	(3.80 m x3.60m)- ( 1.90mx2.50m)
family living	3.60mx3.80m
Terrace	(4.35mx1.95m)

Apartment 04	
<b>Builtup Area</b>	<b>159.65 m<sup>2</sup></b>
Reception - Dining	5.10mx6.05m
Kitchen	3.55mx3.30m
Guest Toilet	1.40mx1.85m
FOYER	5.20 m x 1.30m
Master Bedroom -DRESSING - Ensuite Bathroom	(3.60 m x3.85 m)-(2.50mx1.40m)- (2.40m x 1.80m)
Bedroom 1	(3.80 m x 3.60 m)
Bedroom 2	(3.80 m x3.60m)
Shared Bathroom	(1.90 m x 2.50 m)
Terrace	4.95mx0.70m

#### Disclaimer:

- 1- Renders and accompanying visual materials are not to scale and are intended for illustrative purposes.
- 2- All Landscaping is not included in the property and solely for illustrative purposes.
- 3- Roof finishes and pergolas are for presentation purposes only and are optional based on clients request.
- 4- Palm Hills Developments retains the right to make alterations.



**Type B3 Second Floor Plan**

**Second floor**

<b>Apartment 21</b>	
<b>Builtup Area</b>	<b>181.30 m<sup>2</sup></b>
Reception - Dining	( 6.60 m x 4.00 m)-(5.15mx 2.10m)
Kitchen	3.45mx3.55m
Guest Toilet	1.40mx1.85m
FOYER	5.10 m x 1.30m
Master Bedroom -DRESSING - Ensuite Bathroom	(3.60 m x 4.00 m)-(2.50mx1.40m)- (2.40m x 1.80m)
Bedroom 1	(3.60 m x 3.60 m)
Bedroom 2-terrace	(4.15 m x3.60m)- ( 1.50mx1.70m)
Shared Bathroom	(2.30 m x 2.50 m)
Terrace	(5.00mx1.75m)

<b>Apartment 22</b>	
<b>Builtup Area</b>	<b>183.25 m<sup>2</sup></b>
Reception - Dining	(6.60mx3.50m)-(4.45mx3.10m)
Kitchen	3.45mx3.55m
Guest Toilet	1.40mx1.85m
FOYER	5.10 m x 1.30m
Master Bedroom -DRESSING - Ensuite Bathroom	(3.60 m x 4.00 m)-(2.50mx1.40m)- (2.00m x 1.80m)
Bedroom 1	(3.60 m x 4.00 m)
Bedroom 2-terrace	(4.15 m x3.60m)- ( 1.50mx1.75m)
Shared Bathroom	(2.30 m x 2.50 m)
Terrace	(5.00mx1.75m)

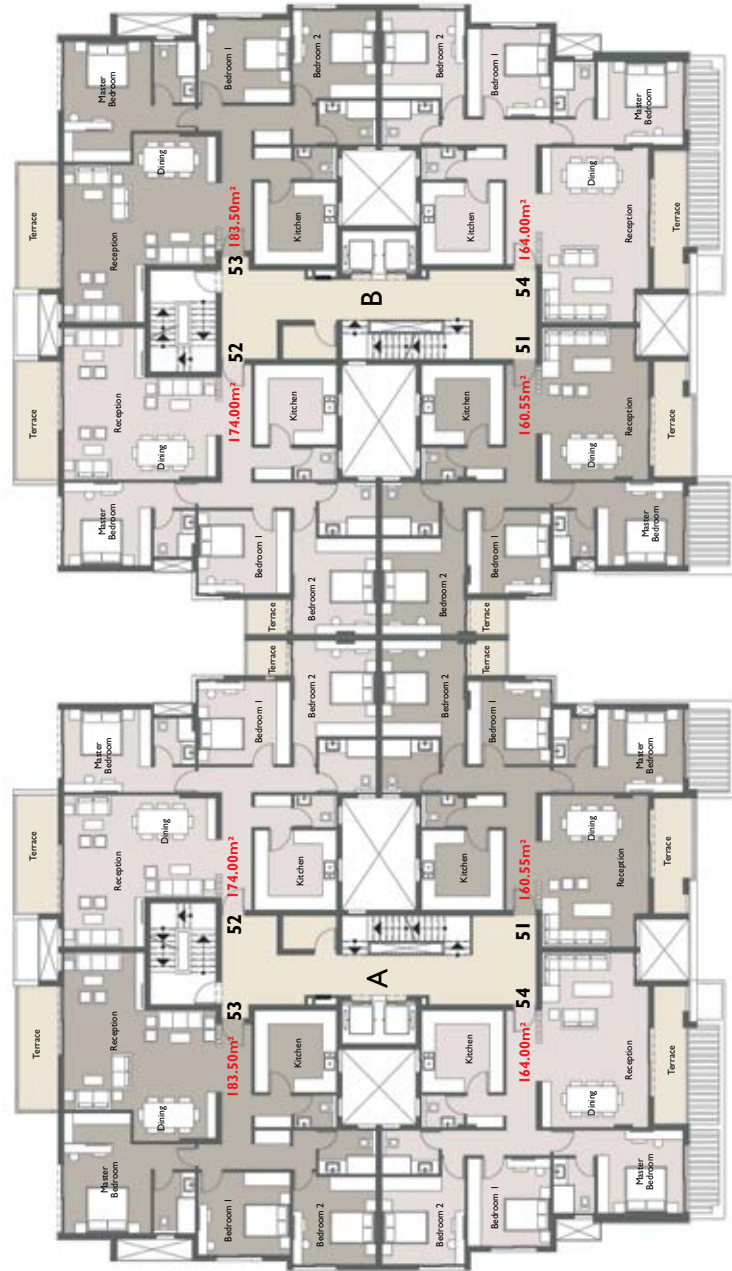
<b>Apartment 23</b>	
<b>Builtup Area</b>	<b>205.55 m<sup>2</sup></b>
Reception - Dining	( 5.70 m x 3.50 m) - (5.70mx3.10m)
Kitchen	3.55mx3.55m
Guest Toilet	1.40mx1.85m
FOYER	5.20 m x 1.30m
Master Bedroom - Ensuite Bathroom	(3.60 m x 3.80 m)-(2.65m x 1.80m)
Bedroom 1-Bathroom	(3.60 m x 4.00 m) -(2.65mx1.80m)
Bedroom 2-Bathroom	(3.80 m x3.60m)- ( 1.90mx2.50m)
family living	3.60mx3.80m
Terrace	(3.95mx2.00m)

<b>Apartment 24</b>	
<b>Builtup Area</b>	<b>185.30 m<sup>2</sup></b>
Reception - Dining	(7.60m x 4.00m) - (6.15m x 2.10m)
Kitchen	(3.55m x 3.55m)
Guest Toilet	(1.40m x 1.85m)
FOYER	(5.20 m x 1.30m)
Master Bedroom -DRESSING - Ensuite Bathroom	(3.60 m x 3.85 m) - (2.50m x 1.40m)- (2.40m x 1.80m)
Bedroom 1	(3.80 m x 3.60 m)
Bedroom 2	(3.80 m x 3.60m)
Shared Bathroom	(1.90m x 2.50m)
Terrace	(5.85m x 1.60m)

**Disclaimer:**

- 1- Renders and accompanying visual materials are not to scale and are intended for illustrative purposes.
- 2- All Landscaping is not included in the property and solely for illustrative purposes.
- 3- Roof finishes and pergolas are for presentation purposes only and are optional based on clients request.
- 4- Palm Hills Developments retains the right to make alterations.





## Type B3 Fifth Floor Plan

Fifth floor	
<b>Apartment 51</b>	
<b>Builtup Area</b>	<b>160.55 m<sup>2</sup></b>
Reception - Dining	( 6.60 m x 4.00 m) - (5.15mx 0.60m)
Kitchen	(3.45m x 3.55m)
Guest Toilet	(1.40m x 1.85m)
FOYER	(5.10 m x 1.30m)
Master Bedroom - Ensuite Bathroom	(3.60 m x 3.70 m) - (2.40m x 1.80m)
Bedroom 1	(3.60 m x 3.60m)
Bedroom 2-terrace	(4.15 m x3.60m) - ( 1.50mx1.70m)
Shared Bathroom	(2.30 m x 2.50 m)
Terrace	(5.00m x 1.70m)
<b>Apartment 52</b>	
<b>Builtup Area</b>	<b>174.00 m<sup>2</sup></b>
Reception - Dining	(6.60mx3.50m) - (4.45mx3.10m)
Kitchen	(3.45m x 3.55m)
Guest Toilet	(1.40m x 1.85m)
FOYER	(5.10 m x 1.30m)
Master Bedroom - Ensuite Bathroom	(3.60 m x 3.80 m) - (2.00m x 1.80m)
Bedroom 1	(3.60 m x 4.00 m)
Bedroom 2-terrace	(4.15 m x3.60m)- ( 1.50mx1.75m)
Shared Bathroom	(2.30m x 2.50m)
Terrace	(5.15m x 1.85m)

<b>Apartment 53</b>	
<b>Builtup Area</b>	<b>183.50 m<sup>2</sup></b>
Reception - Dining	( 6.85m x 3.50 m) - (5.70mx3.10m)
Kitchen	(3.55m x 3.55m)
Guest Toilet	(1.40m x 1.85m)
FOYER	(5.20 m x 1.30m)
Master Bedroom - Ensuite Bathroom	(5.20 m x 3.80m) - (2.65m x 1.80m)
Bedroom 1	(3.60 m x 4.00 m)
Bedroom 2-bathroom	(3.80 m x3.60m)- ( 1.90mx2.50m)
Shared Bathroom	(1.90mx2.50m)
Terrace	(5.50m x 1.70m)
<b>Apartment 54</b>	
<b>Builtup Area</b>	<b>164.00 m<sup>2</sup></b>
Reception - Dining	(7.60mx4.00m) - (6.15mx0.60m)
Kitchen	(3.55m x 3.55m)
Guest Toilet	(1.40m x 1.85m)
FOYER	(5.20 m x 1.30m)
Master Bedroom - Ensuite Bathroom	(3.60 m x3.70 m) - (2.40m x 1.80m)
Bedroom 1	(3.80 m x 3.60 m)
Bedroom 2	(3.80 m x 3.60m)
Shared Bathroom	(1.90m x 2.50m )
Terrace	(6.00m x 1.50m)

**Disclaimer:**  
 1- Renders and accompanying visual materials are not to scale and are intended for illustrative purposes.  
 2- All Landscaping is not included in the property and solely for illustrative purposes.  
 3- Roof finishes and pergolas are for presentation purposes only and are optional based on clients request.  
 4- Palm Hills Developments retains the right to make alterations.