

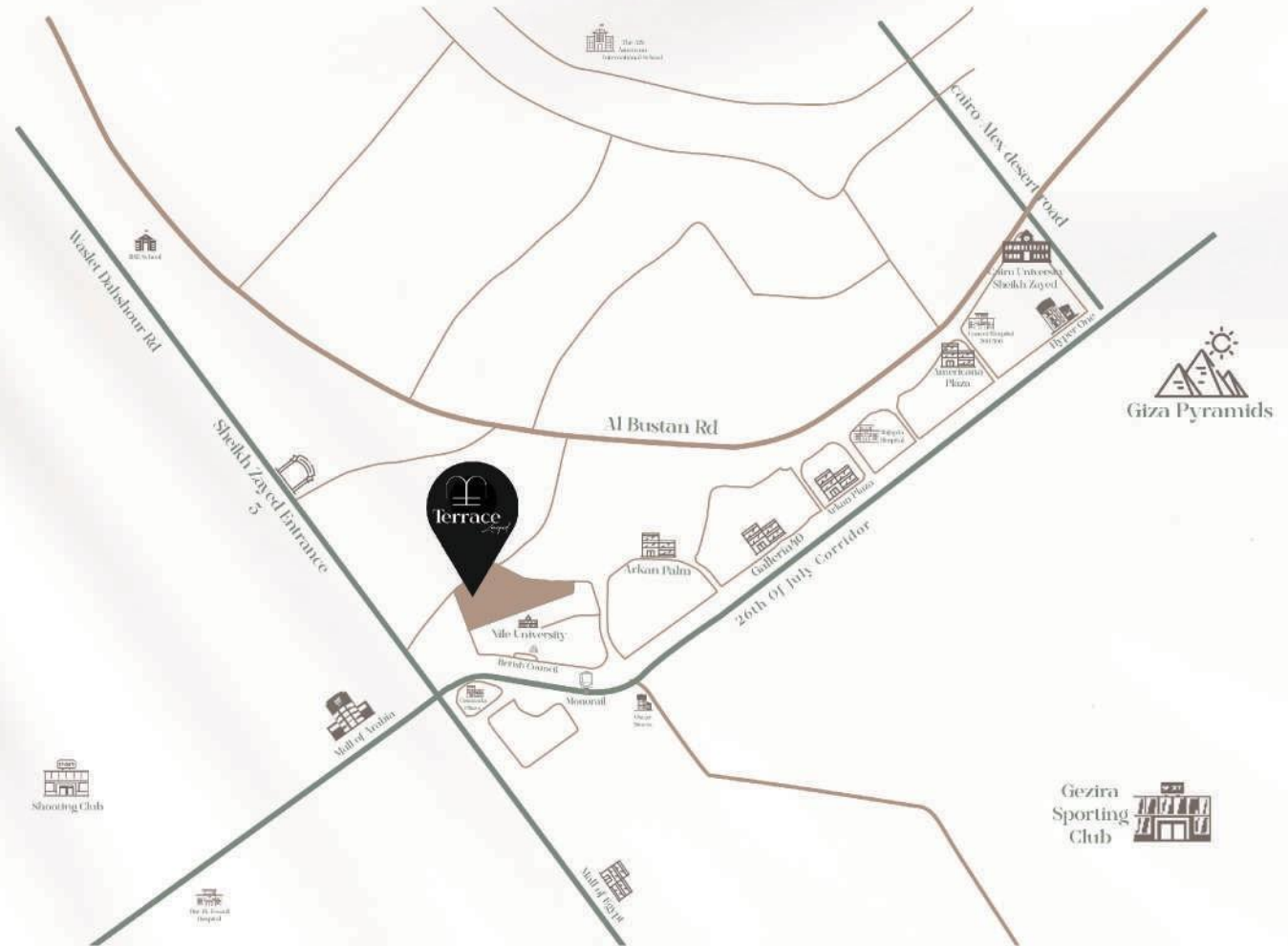


Terrace

Layed

Location

- Inner lanes
- Facilities and amenities
- Main roads
- Our location



Terrace is centrally located amidst Sheikh Zayed in the Greater Cairo urban area. It is surrounded by well-developed roads overlooking 26th of July Corridor and Waslet Dahshour. Commercial, educational, and medical facilities are just a walk away from the compound. Terrace is a gated community in a developed urban area, its prime location and design are meticulously planned to provide its residents a sub-urban feeling in an urban environment.



- 1- T PROMENADE
- 2- RIVER WALK
- 3- FAMILY CORNER
- 4- FLOATING DECK
- 5- BRIDGE
- 6- SERENITY CORNER
- 7- WEST PIAZZA
- 8- VALLEY
- 9- EAST PIAZZA
- 10- THE COZY ZONE
- 11- THE POND ZONE
- 12- 600 M TRACK

84%

Greenery and Open Spaces

16%

Built-up Area

130,000

Square meter Area











A House

Buildings offering double-height entrances that emphasize on space, natural light, and modernity surrounded by gardens and waterscapes.

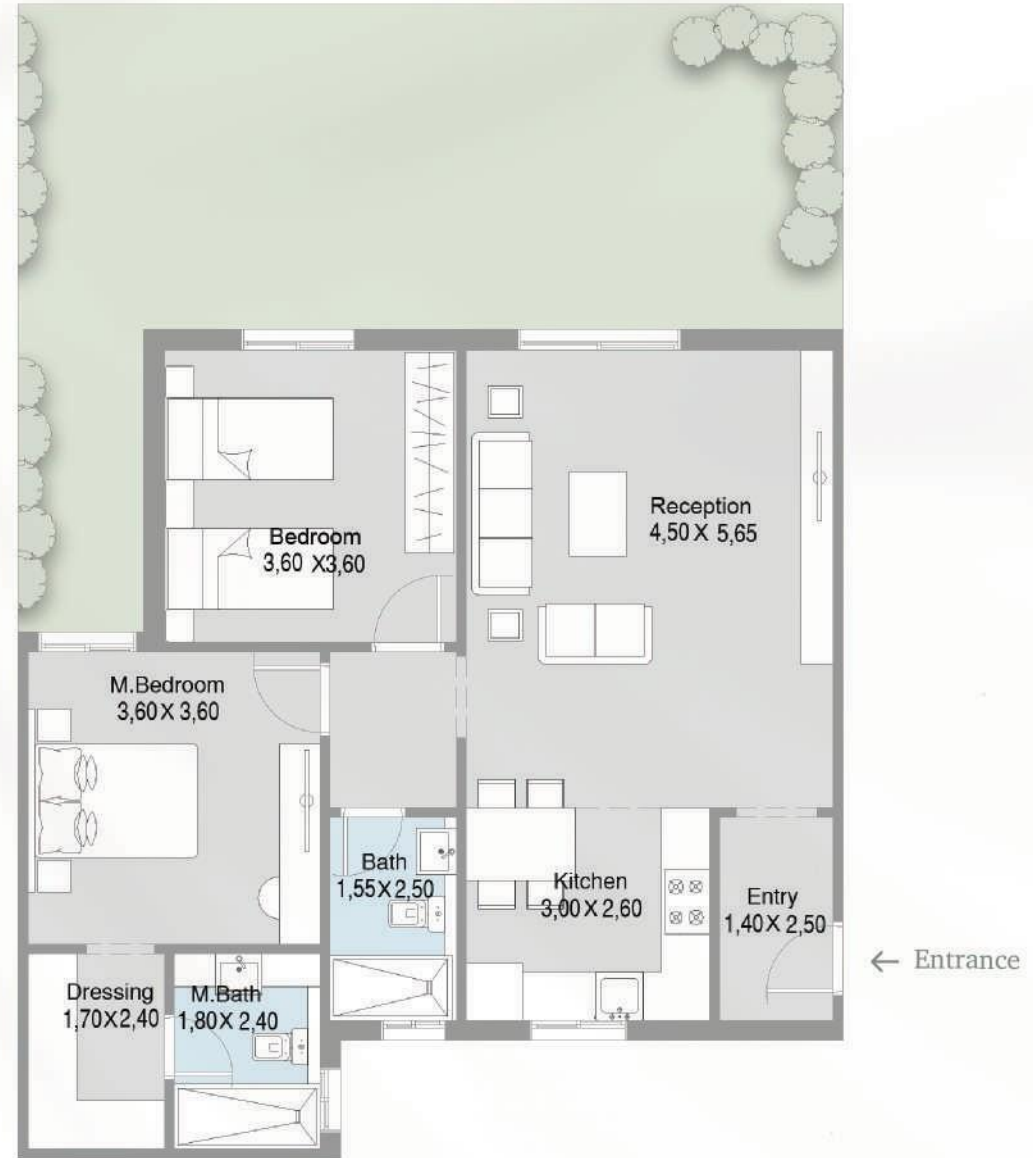




A House

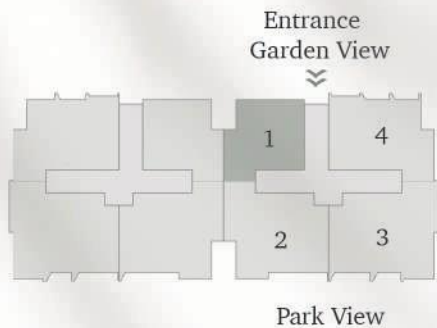
Entrance **A** Unit 1

Unit Area = 108 m²
 Number of Bedrooms = 2
 Number of Bathrooms = 2



Disclaimer:

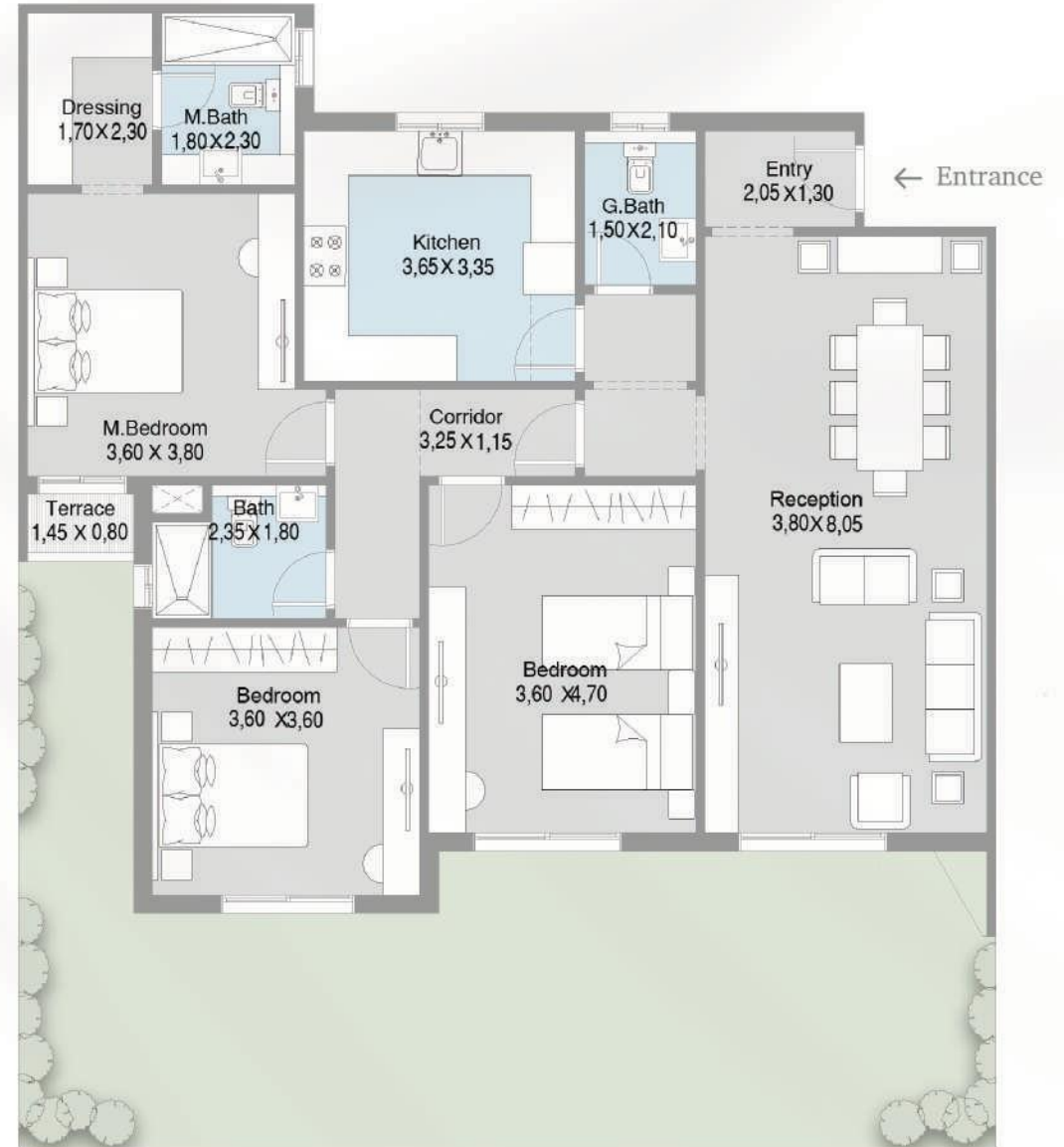
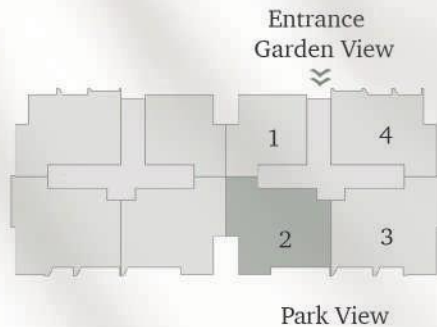
- 1-All Room dimensions are measured to structural elements and exclude wall finishes and construction tolerance.
- 2-All Dimensions have been provided by our consultant architect.
- 3-All Material, dimensions and drawings are approximate and information is subject to change without notice.
- 4-Actual area may vary from the stated area within 5% margin.
- 5-Drawings area are not to scale.
- 6-The developer reserves the right to make revisions
- 7-Actual unit areas, window, porches, terraces and exterior trim details may vary by elevation style.
- 8-The unit orientation will be shown in the master plan and not the floor plan.



A House

Entrance Unit 2

Unit Area = 159 m²
 Number of Bedrooms = 3
 Number of Bathrooms = 3



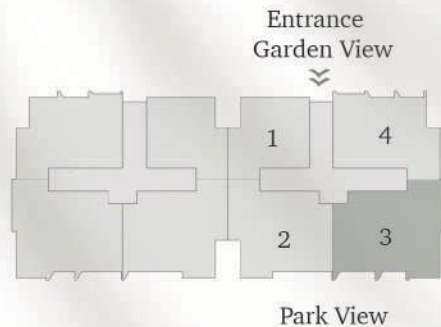
Disclaimer:

- 1-All Room dimensions are measured to structural elements and exclude wall finishes and construction tolerance.
- 2-All Dimensions have been provided by our consultant architect.
- 3-All Material, dimensions and drawings are approximate and information is subject to change without notice.
- 4-Actual area may vary from the stated area within 5% margin.
- 5-Drawings area are not to scale.
- 6-The developer reserves the right to make revisions
- 7-Actual unit areas, window, porches, terraces and exterior trim details may vary by elevation style.
- 8-The unit orientation will be shown in the master plan and not the floor plan.

A House

Entrance Unit 3

Unit Area = 174 m²
 Number of Bedrooms = 3
 Number of Bathrooms = 3
 Maid room



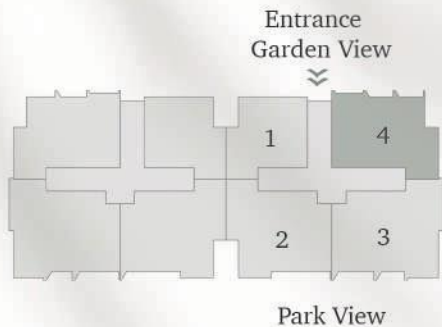
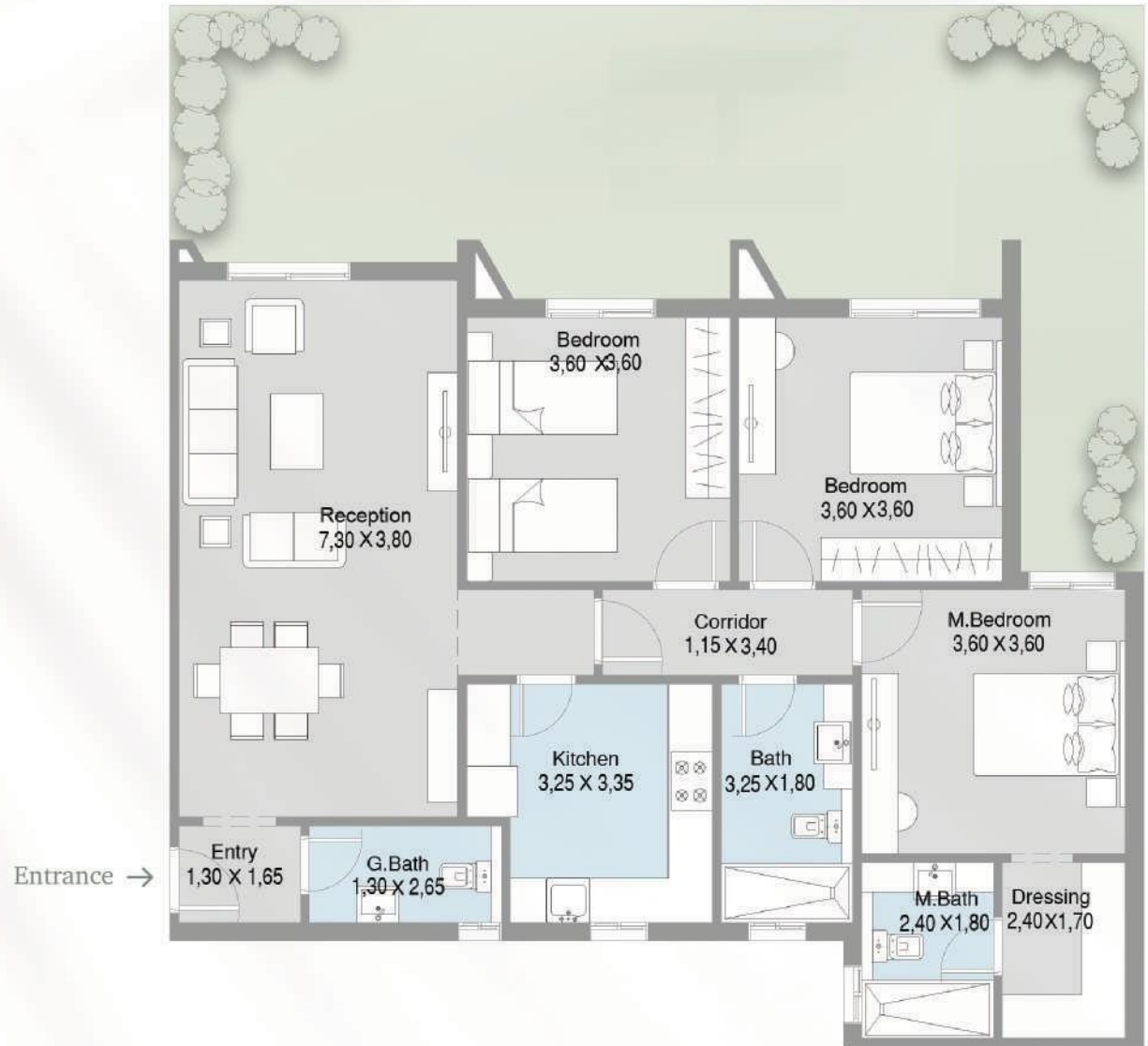
Disclaimer:

- 1-All Room dimensions are measured to structural elements and exclude wall finishes and construction tolerance.
- 2-All Dimensions have been provided by our consultant architect.
- 3-All Material, dimensions and drawings are approximate and information is subject to change without notice.
- 4-Actual area may vary from the stated area within 5% margin.
- 5-Drawings area are not to scale.
- 6-The developer reserves the right to make revisions
- 7-Actual unit areas, window, porches, terraces and exterior trim details may vary by elevation style.
- 8-The unit orientation will be shown in the master plan and not the floor plan.

A House

Entrance A Unit 4

Unit Area = 145 m²
 Number of Bedrooms = 3
 Number of Bathrooms = 3



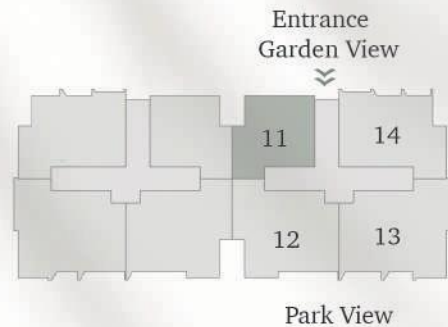
Disclaimer:

- 1-All Room dimensions are measured to structural elements and exclude wall finishes and construction tolerance.
- 2-All Dimensions have been provided by our consultant architect.
- 3-All Material, dimensions and drawings are approximate and information is subject to change without notice.
- 4-Actual area may vary from the stated area within 5% margin.
- 5-Drawings area are not to scale.
- 6-The developer reserves the right to make revisions
- 7-Actual unit areas, window, porches, terraces and exterior trim details may vary by elevation style.
- 8-The unit orientation will be shown in the master plan and not the floor plan.

A House

Entrance Unit 11

Unit Area = 122 m²
 Number of Bedrooms = 2
 Number of Bathrooms = 2



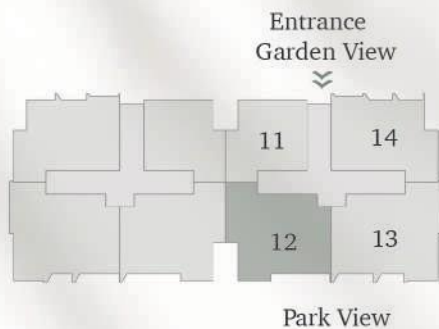
Disclaimer:

- 1-All Room dimensions are measured to structural elements and exclude wall finishes and construction tolerance.
- 2-All Dimensions have been provided by our consultant architect.
- 3-All Material, dimensions and drawings are approximate and information is subject to change without notice.
- 4-Actual area may vary from the stated area within 5% margin.
- 5-Drawings area are not to scale.
- 6-The developer reserves the right to make revisions
- 7-Actual unit areas, window, porches, terraces and exterior trim details may vary by elevation style.
- 8-The unit orientation will be shown in the master plan and not the floor plan.

A House

Entrance A Unit 12/22/32/42

Unit Area = 171-172 m²
 Number of Bedrooms = 3
 Number of Bathrooms = 3



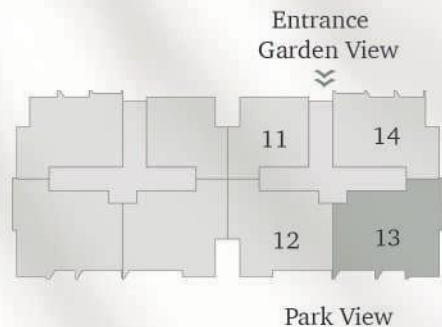
Disclaimer:

- 1-All Room dimensions are measured to structural elements and exclude wall finishes and construction tolerance.
- 2-All Dimensions have been provided by our consultant architect.
- 3-All Material, dimensions and drawings are approximate and information is subject to change without notice.
- 4-Actual area may vary from the stated area within 5% margin.
- 5-Drawings area are not to scale.
- 6-The developer reserves the right to make revisions
- 7-Actual unit areas, window, porches, terraces and exterior trim details may vary by elevation style.
- 8-The unit orientation will be shown in the master plan and not the floor plan.

A House

Entrance **A** Unit 13/23/33

Unit Area = 186-187 m²
 Number of Bedrooms = 3
 Number of Bathrooms = 3
 Maid room



Disclaimer:

- 1-All Room dimensions are measured to structural elements and exclude wall finishes and construction tolerance.
- 2-All Dimensions have been provided by our consultant architect.
- 3-All Material, dimensions and drawings are approximate and information is subject to change without notice.
- 4-Actual area may vary from the stated area within 5% margin.
- 5-Drawings area are not to scale.
- 6-The developer reserves the right to make revisions
- 7-Actual unit areas, window, porches, terraces and exterior trim details may vary by elevation style.
- 8-The unit orientation will be shown in the master plan and not the floor plan.

Thank You

🌐 www.hdp.com.eg

📍 Twelve-B1-5th floor- B1-5-01, Sheikh Zayed City

☎ 19845