

Karmell

New Zayed

Californian
inspired
living

New launch Berif





Karmell

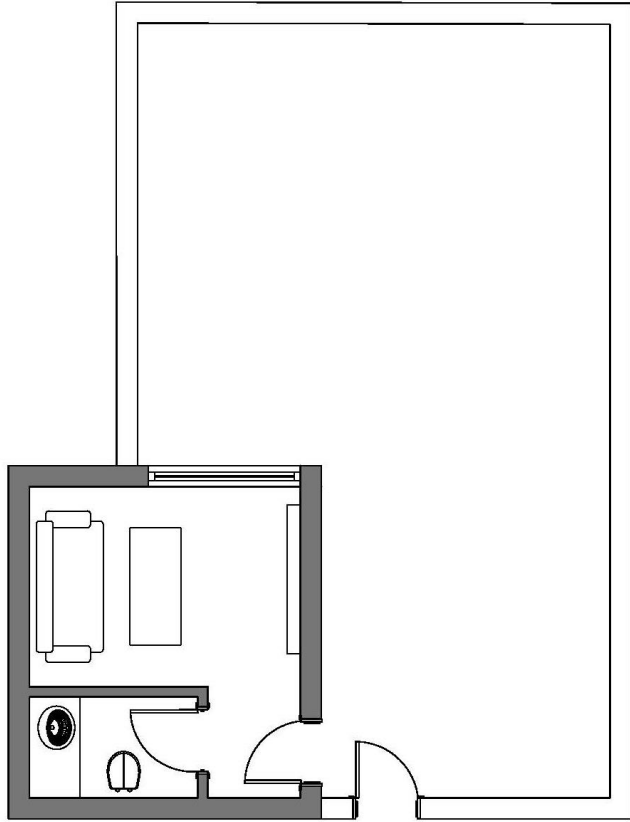
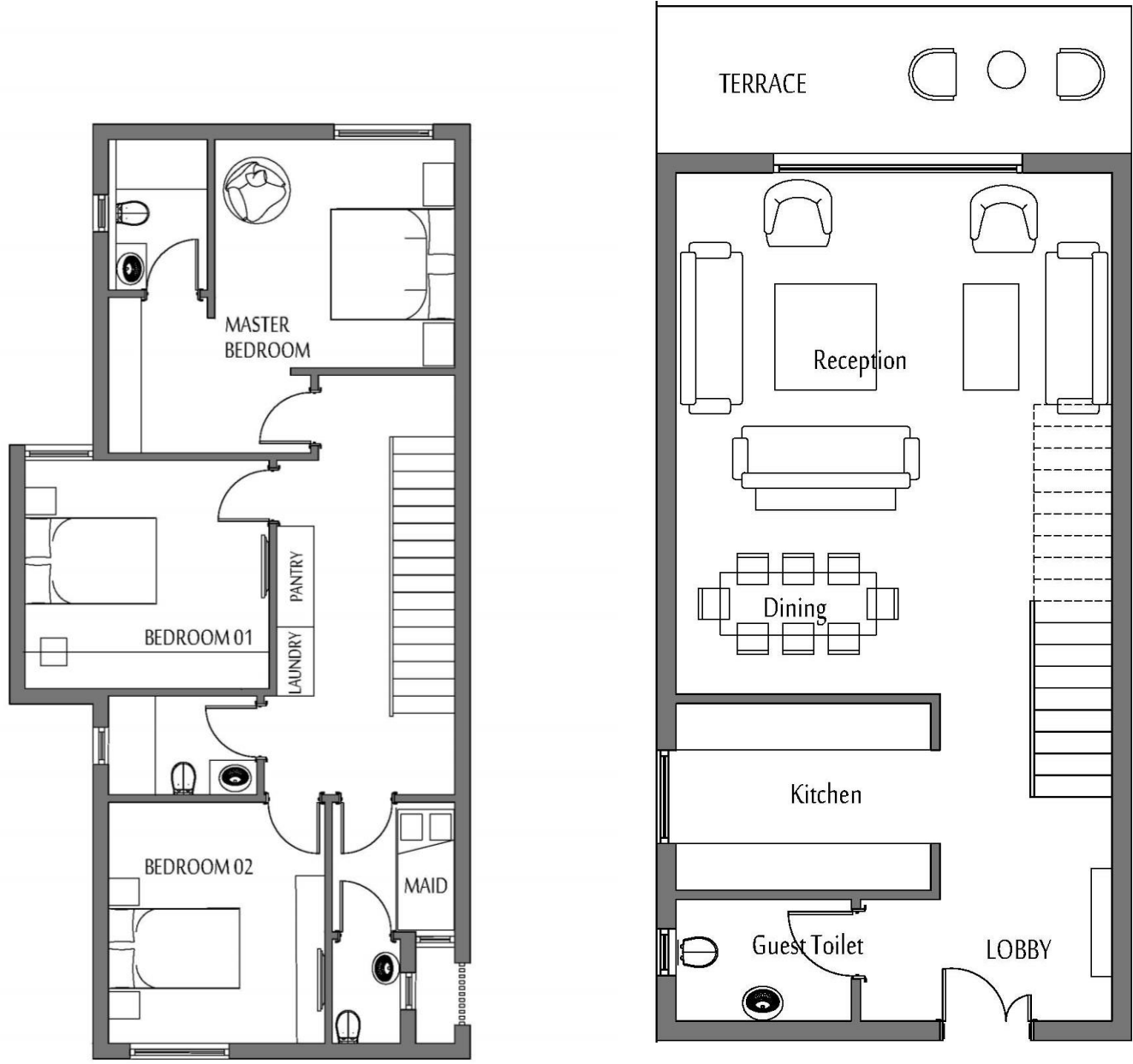
-  RESIDENTIAL ENTRANCE
-  PARKS
-  COMMUNITY CENTERS



*All rendering and other visual material, designs, facades are for illustrative purpose only and are subject to change.

SKY HOUSE 01

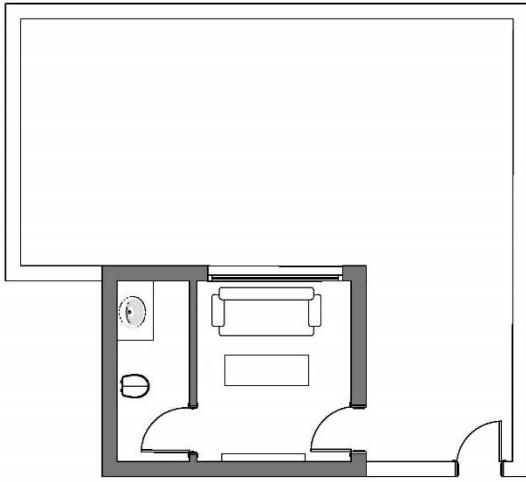
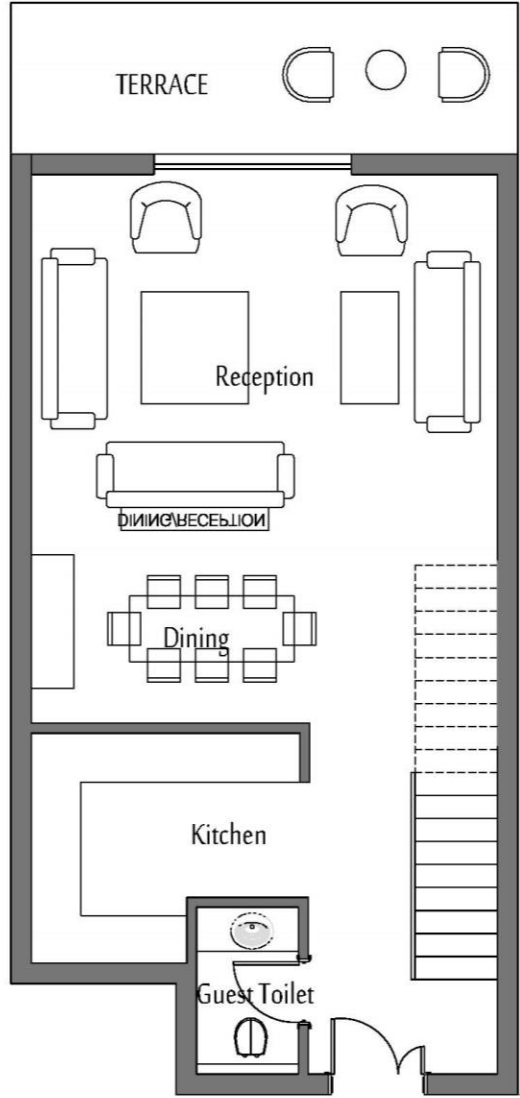
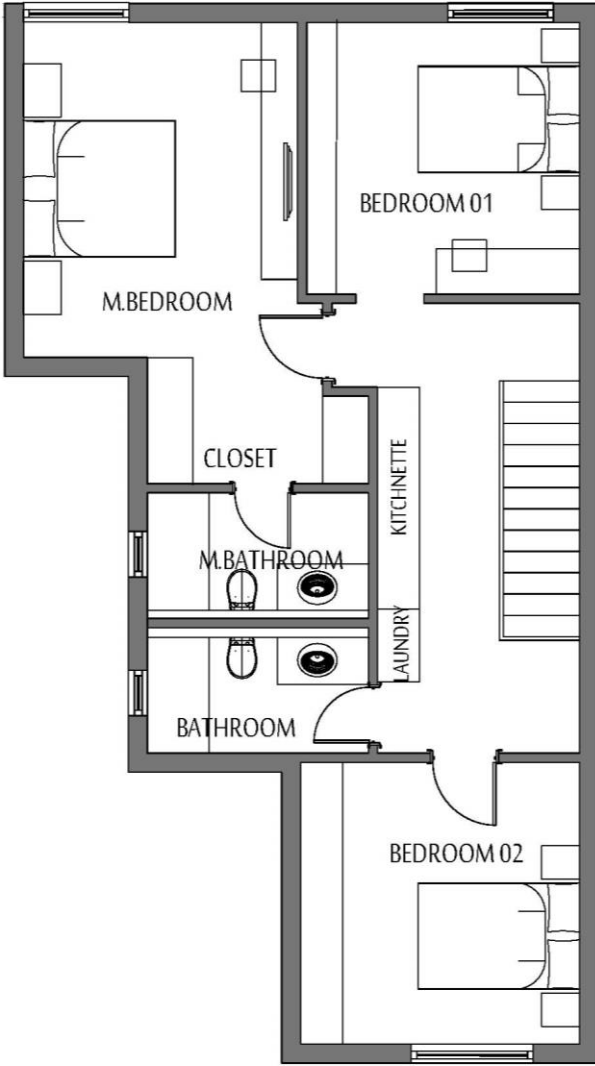
3 BEDROOM + NANNY
AREA 215 SQM



*All rendering and other visual material, designs, facades are for illustrative purpose only and are subject to change.

SKY HOUSE 02

3 BEDROOM
AREA 204 SQM



*All rendering and other visual material, designs, facades are for illustrative purpose only and are subject to change.

Karmell Villas



Karmell Apartments



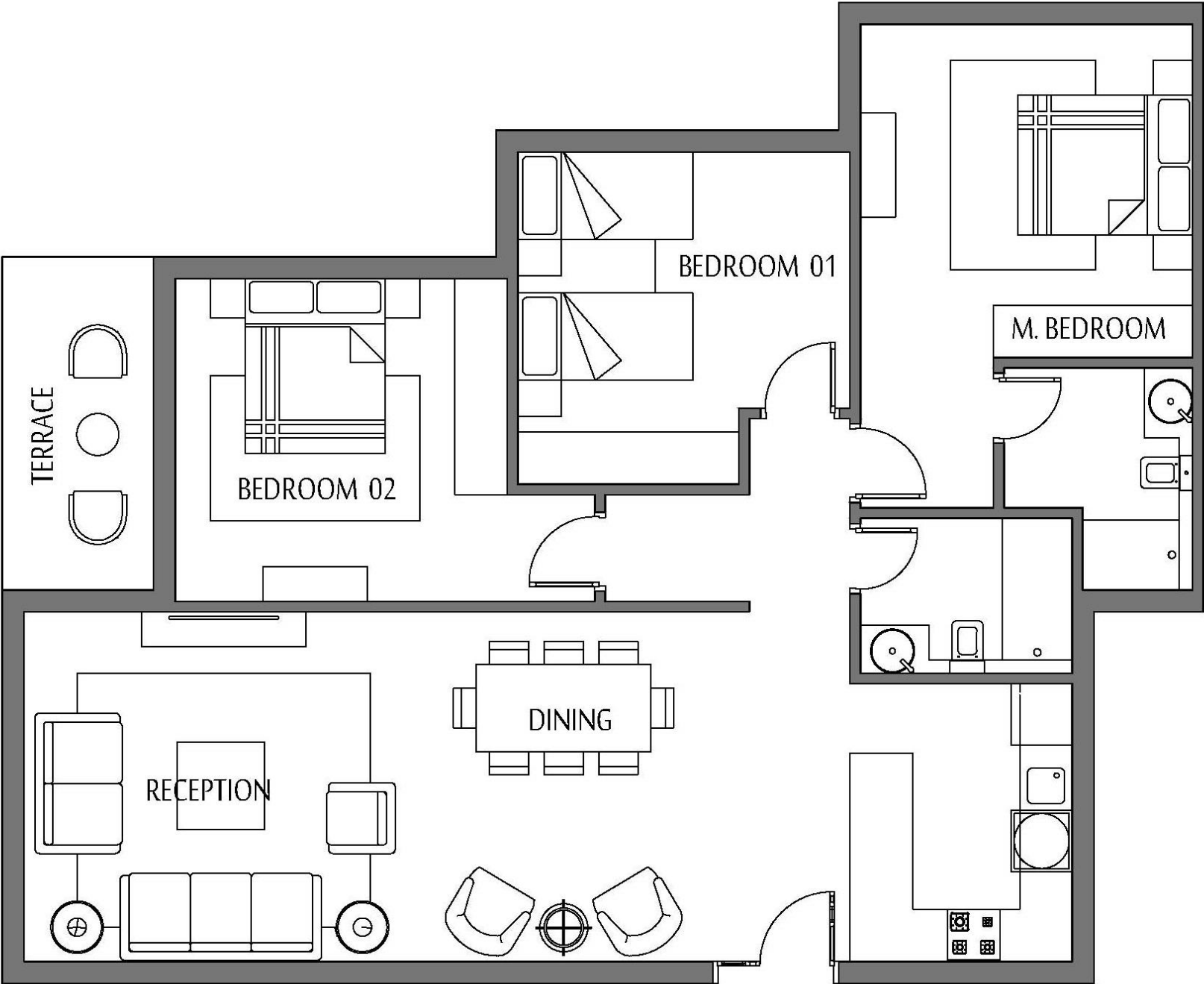
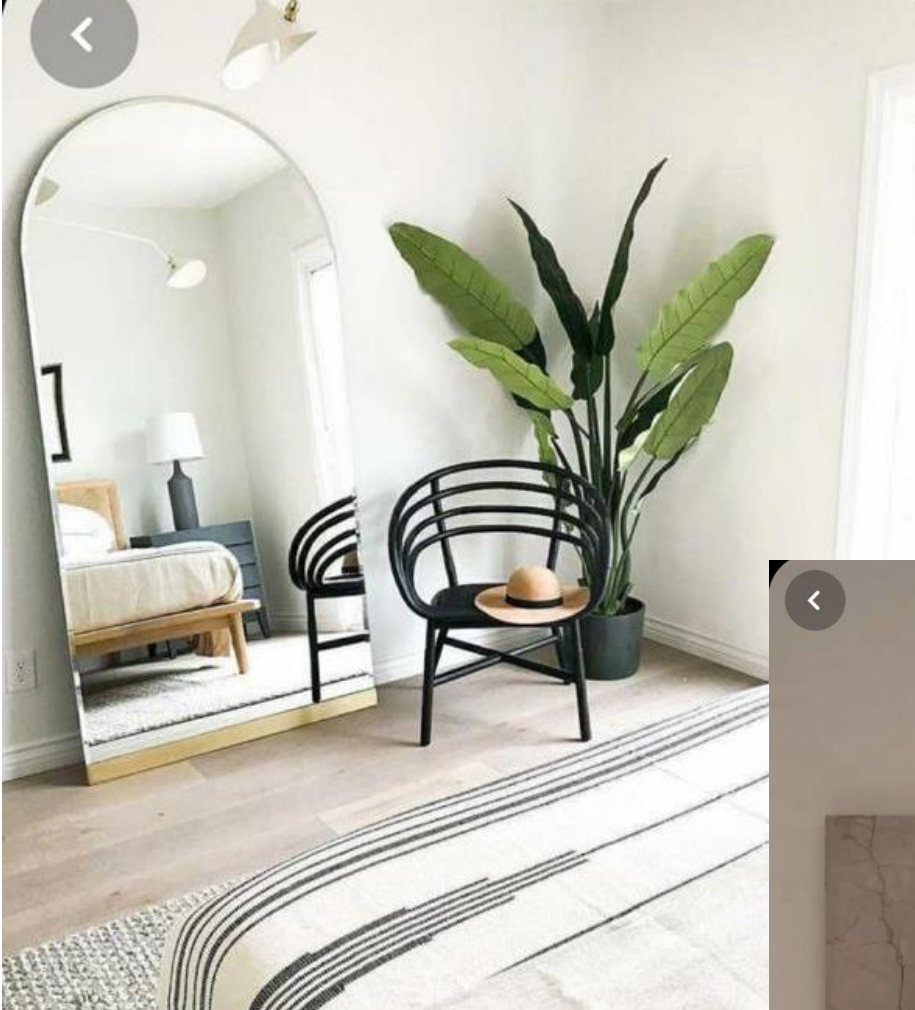
*All rendering and other visual material, designs, facades are for illustrative purpose only and are subject to change.

APARTMENTS

APK.03

3 Bedroom

GROSS AREA : 150 SQM

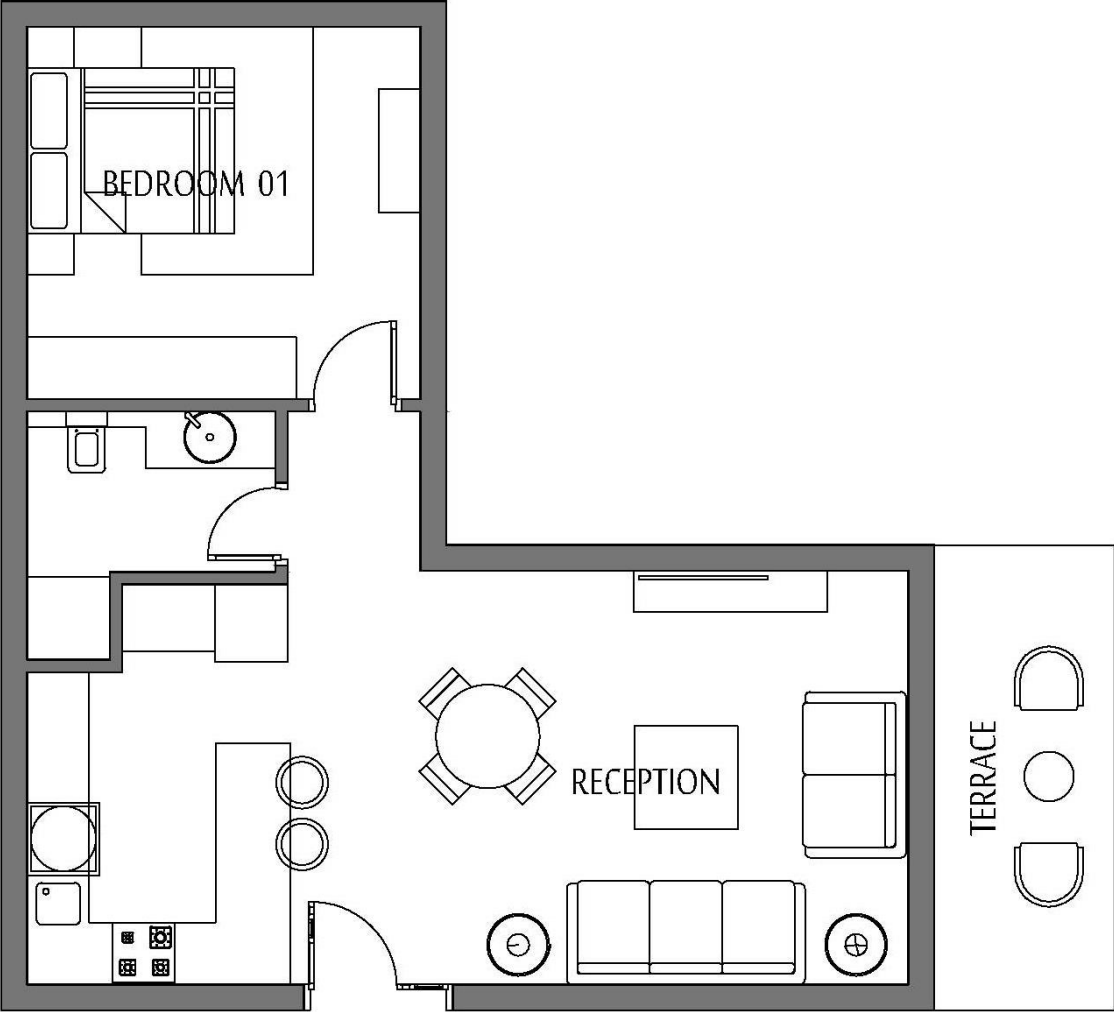


*All rendering and other visual material, designs, facades are for illustrative purpose only and are subject to change.

APARTMENTS

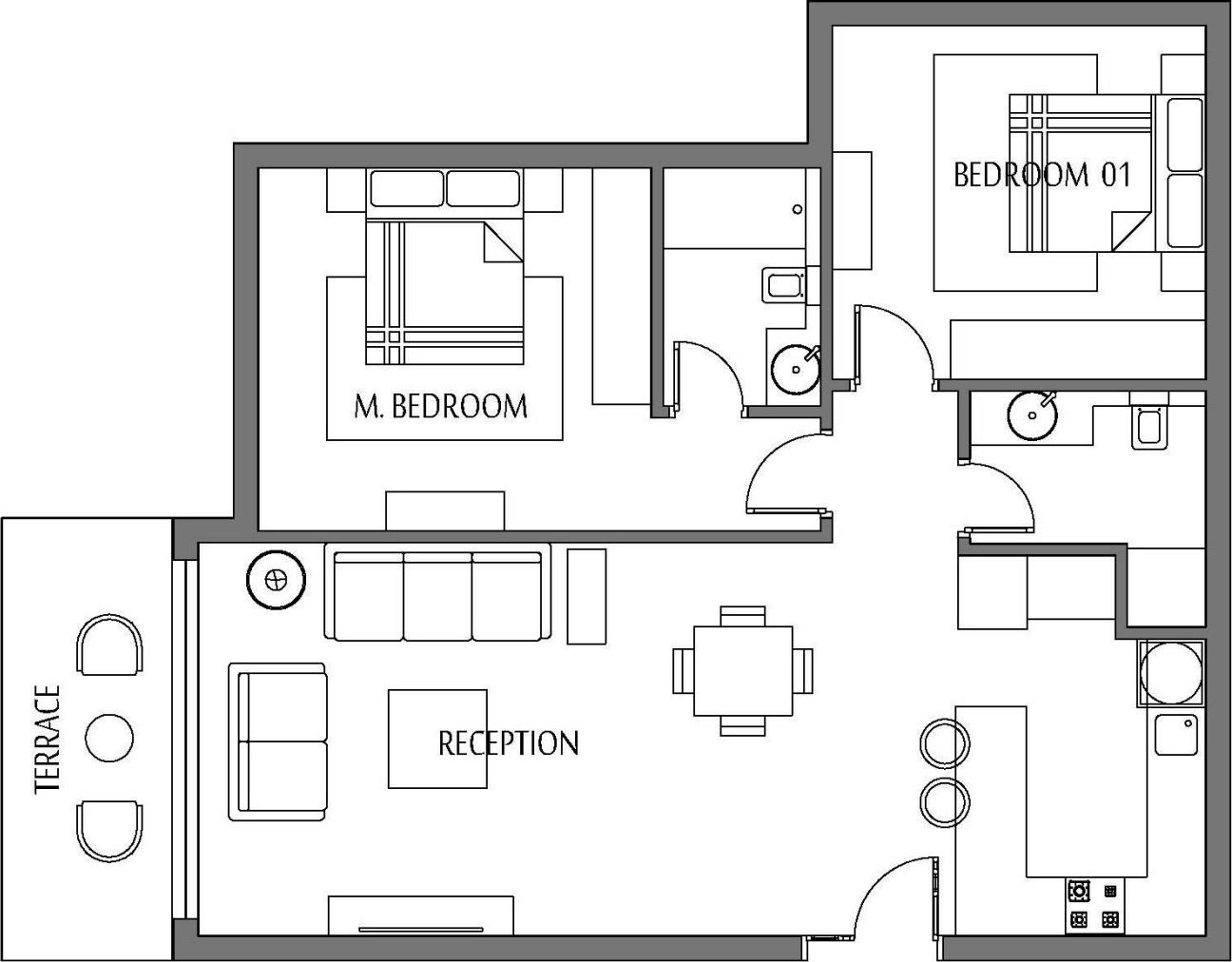
APK.01

1 BED - GROSS AREA : 81.97 SQM



APK.02

2 BED - GROSS AREA : 120.83 SQM



*All rendering and other visual material, designs, facades are for illustrative purpose only and are subject to change.

Thank you